

# *PaceSetter* FEBRUARY 2013

*(This cake was such a hit at the After Holiday Party that the last pieces were hidden so they could go home with an un-named member.)*

We had a great time at the After Holiday Party in January. My daughter, Ashley, was visiting from Washington DC. She spent the afternoon baking a carrot cake that everyone was raving over. I thought I would put the recipe in the newsletter for everyone to try. Here you go.

By popular request; Ashley Keiser Bender's

## **Carrot Cake Recipe**

4 eggs  
3/4 cup vegetable oil  
1/2 cup apple sauce  
1 cup sugar  
1 cup brown sugar  
3 tsp. vanilla extract  
2 cups flour  
2 tsp. baking soda  
2 tsp. baking powder  
1/2 tsp. salt

3 tsp. cinnamon  
1/4 tsp. nutmeg  
3 cups grated carrots  
8 oz. can crushed pineapple (squeeze juice out hard in colander)  
1-1/4 cups chopped walnuts

## **Icing**

3/4 cup butter softened (room temp.)  
12 oz. cream cheese (room temp.)  
3 cups powdered sugar  
1 tsp. vanilla extract

Preheat oven to 350 degrees. Grease and flour 2 round 9" cake pans. Beat eggs, oil, sugar and 3 tsp. vanilla. Mix in flour, baking soda, baking powder, salt, cinnamon, and nutmeg. Stir in carrots, apple sauce and pineapple. Add half of the walnuts. Pour in prepared pans. Bake 40 - 50 min. Let cool until ready to ice.

Mix butter with the cream cheese and slowly add vanilla and sugar. Beat until smooth and creamy. Frost 1st cake, add second, frost and smooth sides. Add remaining chopped walnuts to top.

**(Keep cool so it doesn't melt.)**

**From Scott Keiser**

# **KY PCA Website**

[www.kypca.org](http://www.kypca.org)

## **Forums & E-Mail List**

Stay informed and participate! Join the KYPCA forums & mailing list and be notified of upcoming events, club news, and membership information.

Remember, it's your participation as a member that makes the club successful.

Please visit the below website and sign-up today!

<http://forums.kypca.org/>

### **Current Forums List:**

- **Let's Go Driving**
- **Want To Sell**
- **Want To Buy**
- **Recycler**
- **Tech Talk**
- **Make It Shine**
- **Track & DE**
- **Autocross**
- **Club News**
- **Off Topic**
- **Member Rides (upload your photos)**

[www.kypca.org/news](http://www.kypca.org/news)

(club activities, meetings, or general announcements from KY Region PCA, the latest issue of the Pacesetter (our monthly newsletter), announcements of new models, racing news)

[www.kypca.org/information](http://www.kypca.org/information)

(club specific documents, upcoming club events, frequently asked questions, mailing list sign-up, Web Links)

[www.kypca.org/media](http://www.kypca.org/media)

(photos and videos from club events (member submitted or just something we think is really cool and Porsche related))

Having trouble viewing the kypca.org website? Do you have a suggestion on how we can improve it? Please send any feedback you might have to [feedback@kypca.org](mailto:feedback@kypca.org).

## **2013 KENTUCKY REGION PCA OFFICERS & BOARD MEMBERS**

### **President:**

**Matt Innes**

Prospect, KY

(502) 552-5487

[mattinnes1@aol.com](mailto:mattinnes1@aol.com)

### **Vice President:**

**Jeremy Miller**

Fisherville, KY

(502) 396-9111

[jers993@msn.com](mailto:jers993@msn.com)

### **Secretary:**

**Granger Adams**

Louisville, KY

(502) 457-7624

[grangeradams@yahoo.com](mailto:grangeradams@yahoo.com)

### **Treasurer:**

**Richard Darnell**

Louisville, KY

(502) 889-8120

[rdarnell@ayeblink.com](mailto:rdarnell@ayeblink.com)

### **Membership:**

**Gene Hoffman**

Louisville, KY

(502) 435-4981

[rgenehoffman@gmail.com](mailto:rgenehoffman@gmail.com)

### **Activities Chair:**

**Steven Rountree**

Louisville, KY

(502) 386-3001

[smr9463@insightbb.com](mailto:smr9463@insightbb.com)

### **Activities Committee:**

**Gene Hoffman**

(see above)

**Deborah Schultz**

Louisville, KY

(502) 417-6715

[debbieray@insightbb.com](mailto:debbieray@insightbb.com)

**Edgar Smiley**

Louisville, KY

(502) 939-3595

[deKYblugras@aol.com](mailto:deKYblugras@aol.com)

### **PaceSetter Editor:**

**Belinda Schweinhart**

Goshen, KY

(502) 228-9725

[article@kypca.org](mailto:article@kypca.org)

[belinda@lowcarbrecipes.com](mailto:belinda@lowcarbrecipes.com)

### **Website Chair:**

Mark Bos

Louisville, KY

[mbos@bluegrass.net](mailto:mbos@bluegrass.net)

### **Board Members:**

**Mark Bos (2013-14)**

(see above)

**Scott Keiser (2013-14)**

Louisville, KY

[fullthrottle52@insightbb.com](mailto:fullthrottle52@insightbb.com)

**Jason Miller (2012-13)**

Crestwood, KY

(502) 253-5704

[millermd@insightbb.com](mailto:millermd@insightbb.com)

### **Past President:**

**Steve McCombs**

Louisville, KY

(502) 558-0306

[shmc930@hotmail.com](mailto:shmc930@hotmail.com)

### **SW KY Area Rep.**

**Richard Hughes**

Bowling Green, KY

(270) 991-4848

[jrhughes47@hotmail.com](mailto:jrhughes47@hotmail.com)

# 2013 KY Region PCA Calendar

[www.kypca.org](http://www.kypca.org)

<b>Current Events!!</b>	<b>JANUARY</b>	<b>FEBRUARY</b>	<b>MARCH</b>
<p><b>February 11, 2013 Membership Mtg.</b> Buckhead Mountain Grill Time: 7:00 PM (see page 23)</p> <p><b>February 16, 2013 Breakfast Social</b> Frisch's Poplar Level Road Time: 9:00 AM- ??:?? (see page 18)</p> <p><b>February 17, 2013 Bowling Night</b> Ten Pin Lane Time: 7:00 PM (see page 23)</p> <p><b>NOTES:</b> Contact Information can be obtained in the newsletter on Page 2.</p> <p>All events are subject to change due to weather and availability.</p>		<p><b>11th—Membership Mtg.</b> <i>Buckhead Mountain Grill</i></p> <p><b>16th—Breakfast Social</b></p> <p><b>17th—Ten Pin Bowling</b></p>	<p><b>11th—Membership Mtg.</b> <i>Diorios Pizza</i></p> <p><b>16th—Breakfast Social</b></p> <p><b>24th—Member Drive</b> <i>Overlook Restaurant</i></p>
	<b>APRIL</b>	<b>MAY</b>	<b>JUNE</b>
	<p><b>8th—Membership Mtg.</b> <i>Mellow Mushroom</i></p> <p><b>13th—Breakfast Social</b></p> <p><b>13th—Mid-Ohio event</b></p>	<p><b>13th—Membership Mtg.</b> <i>Matt's house in Prospect</i></p> <p><b>18th—Breakfast Social</b></p> <p><b>17-19th—Biltmore/ Ashville weekend event</b></p>	<p><b>7-9th—DE at Putnam Park</b></p> <p><b>10th—Membership Mtg.</b> <i>El Tarasco Restaurant</i></p> <p><b>15th—Breakfast Social</b></p> <p><b>22nd—Churchill Downs</b></p>
	<b>JULY</b>	<b>AUGUST</b>	<b>SEPTEMBER</b>
	<p><b>8th—Membership Mtg.</b> <i>Champps Restaurant</i></p> <p><b>13th—Breakfast Social</b></p> <p><b>19-21st-Biltmore/ Ashville weekend event</b></p> <p><b>TBA-Lexington Concours</b></p>	<p><b>12th—Membership Mtg.</b> <i>Napa Grill</i></p> <p><b>17th—Breakfast Social</b></p>	<p><b>9th—Membership Mtg.</b> <i>Bristol Bar &amp; Grill</i></p> <p><b>14th—Breakfast Social</b></p> <p><b>13-15th—DE at Putnam Park</b></p>
	<b>OCTOBER</b>	<b>NOVEMBER</b>	<b>DECEMBER</b>
	<p><b>14th—Membership Mtg.</b> <i>Bluegrass Porsche</i></p> <p><b>19th—Breakfast Social</b></p> <p><b>TBA-Huber's Winery Drive</b></p>	<p><b>11th—Membership Mtg.</b> <i>AP Crafters</i></p> <p><b>16th—Breakfast Social</b></p>	<p><b>9th—Membership Mtg.</b> <i>Gault House</i></p> <p><b>14th—Breakfast Social</b></p>

# Kentucky Region, Porsche Club of America, 2012 Change in Net Worth

December 31, 2011 Net Worth  
2012 Net Income (Loss)

**December 31, 2012 Net Worth**

\$  
\$  
\$ 45,555.22

## 2012 Income and Expense Report

### Pacesetter Publishing

Advertising Income	\$ 1,500.00		
Newsletter Rebate			
Other Income			
Total Income		\$	
Printing Expense	\$ 1,267.32		
Postage Expense			
Pacesetter Permit	\$ 215.37		
Website Fees	\$ 1,500.00		
Total Expenses		\$	
Net Income			\$

### Scheduled Events

Drivers Ed Income	\$ 99,049.55		
Drivers Ed Expenses	\$ 77,054.32		
Discount Fees	\$ 4,043.20		
Income (Loss) from Drivers		\$	
Octoberfest Income			
Octoberfest Expenses			
Income (Loss) from Octo-		\$	
Reunion Dinner Income	\$ 460.00		
Reunion Dinner Expenses	\$ 1,178.85		
Income (Loss) from Reun-		\$	
Porsche Derby Income			
Porsche Derby Expenses			
Income (Loss) from Por-		\$	
Misc Event Income			
Misc Event Expenses	\$ 519.53		
Income (Loss) from Misc		\$	
Net Income			\$

### Normal Operations

Quarterly Rebate	\$ 3,517.50		
Special Rebate			
Investment Income	\$ 3.55		
Other Income			
Total Income		\$	
Board Meeting Expense	\$ 5,461.82		
Bank Fees & Charges	\$ 16.00		
Donations	\$ 1,250.00		
Insurance Expense	\$ 306.13		
Legal & Professional	\$ 15.00		
Miscellaneous Expense	\$ 35.00		
Office Supplies Expense			
Postage Expense (Misc)	\$ 150.34		
Printing Expense (Misc)	\$ 13.52		
Storage Expense			
Travel & Meals	\$ 323.26		
Total Expenses		\$	
Net Income (Loss) from			\$

**Net Income (Loss) from Consolidated Operations**

\$ 11,180.94



## Diagnostically speaking, there is no substitute.

The best equipment. And the best minds trained to use it. These are your Porsche certified technicians. Dedicated to Porsche vehicles above all else, they must complete over 80 hours a year training in the latest diagnostic technology and techniques. You'll also take comfort knowing all Porsche genuine parts are factory-backed for two years when installed by your authorized dealer. Better still, there is no substitute for having your vehicle serviced by professionals who not only know Porsche, but live Porsche every day.

## Porsche Certified Service.

Blue Grass Motorsport  
4720 Bowling Blvd.  
Louisville KY 40207  
502-515-5881

Porsche recommends **Mobil 1**



**PORSCHE**

Hello KY PCA Members!

February is the month to celebrate love. Have you seen the new Cayman? Love at first sight! I just got the brochure for it in the mail the other day and it's beautiful. I think it may be a bit optimistic to expect one of those for Valentine's Day but I'm eternally hopeful (please make loud hints to Lucy on my behalf and I'll return the favor).

## **President's Report**

**Matt Innes—KY Region President**

Hope it's not too cold out there for you?! Don't worry, as living in the Louisville area it will be 70 degrees next week I'm sure! Joking aside, carefree sunny days are not too far off and then Porsche driving days will be here once again. Be sure to let our activities committee know of any suggestions you have for good drives or places to visit as new ideas are always welcome. They are busy putting a schedule together for the coming year and I look forward to seeing it as I'm sure you do too.

Last month's meeting was held at the new Champps bar and it was one of our largest turnouts for a while. I was very pleased to see so many faces, so please keep it up! The meetings are a great way to catch up with fellow Porsche enthusiasts and an opportunity to bring up ideas for events. If you have any proposals please come along to a meeting so you can share them with the group.

Our After Holiday Party was held last month at the Lake Forest club house and we had a total of 42 members attending. It was wonderful to see some new faces and lots of old faces! (*Who are you calling old??*) Thanks to all who made this happen and a big thank you to the individuals and companies who provided the fantastic door prizes.

Going forward I thought it would be fun to share some Porsche related history or facts into my monthly newsletter, here's the first:

Porsche can trace its roots to 1900 when engineer Ferdinand Porsche helped design the Lohner- Porsche electric car. Porsche's early work also included the Austro - Daimler touring car and the Mercedes Kompressor sports car. This helped him establish his international credentials as Europe's top automotive engineer and led to the development of the economical Volkswagen Beetle and the Porsche race car.

This month's meeting is at Buckhead Mountain Grill on Bardstown Rd. on Monday 11<sup>th</sup> February. I hope to see you there!

Cheers!  
Matt Innes

---

## **New Activities Committee**

New for 2013 it was decided that there should be a Committee to create the Club Events. We now have a party of four: Deborah Schultz, Edgar Smiley, Gene Hoffman (and family), and myself. Please reach out to any of us with your ideas for fun events throughout the year (our numbers are listed on page 2 of every PaceSetter). There are still many Members that we don't even know, so please join us at our Monthly Club Meetings to socialize and plan events. We continue to have great turnouts at our Meetings, we had 29 Members in January, so we hope to see you soon!

Thank you,  
Steven Rountree  
Activities Chair



# Photos from the After Holiday Party

By Holly Miller



It's time to get our 'Porsche' on!



Members congregated at the bar area of the Lake Forest Lodge.



Crackin' Jokes



The night began with appetizers and drinks.



Conversing





The early crowd.



Checking out the table of Door Prizes.



Door Prizes



A nice cozy spot for conversations.



More people arriving.





Hanging out behind the bar . . .



Car Talk



Guests arriving.



Mingling



Food & Fun





The Lodge filled up fast this year!



Matt saying a few words as everyone begins eating.



Eating



Their first club event - what a great way to start! :)



A very 'lucky' table (later in the evening) . . .





Enjoying their dinner.



Brooklyn Brewery Giveaway



KY PCA 2013 After-Holiday Party



Giveaways

**PORSCHE®**



Dinner Time





Crystal Porsche



Richard & Debbie selling raffle tickets.



Discussing cars with friends.



Time for door prizes!



Ladies Table!





Matt showing off a free oil change door prize.



Shelly wins!



Steven being generous with his win!



Matt with a beautiful Porsche calendar giveaway.

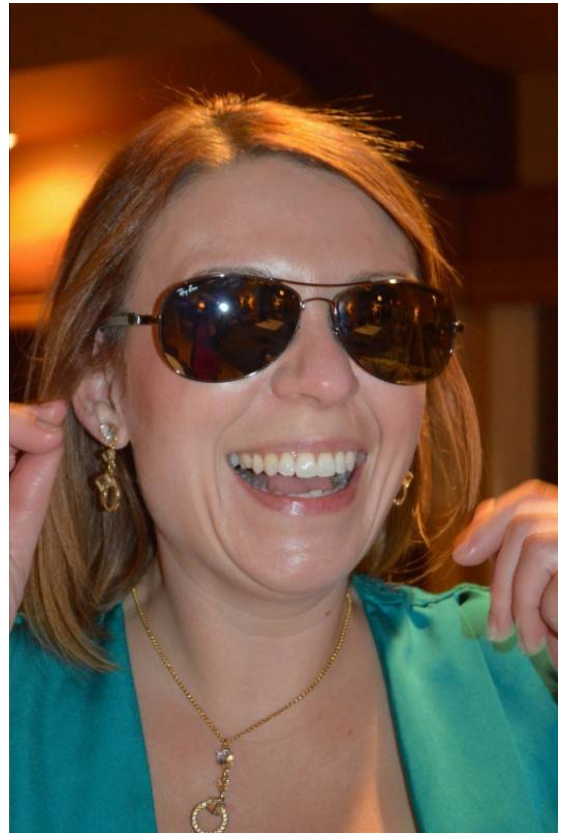


The winning table of the night!





Some new sunglasses for Jason!



Lucy gives the glasses a spin . . .



A winner!

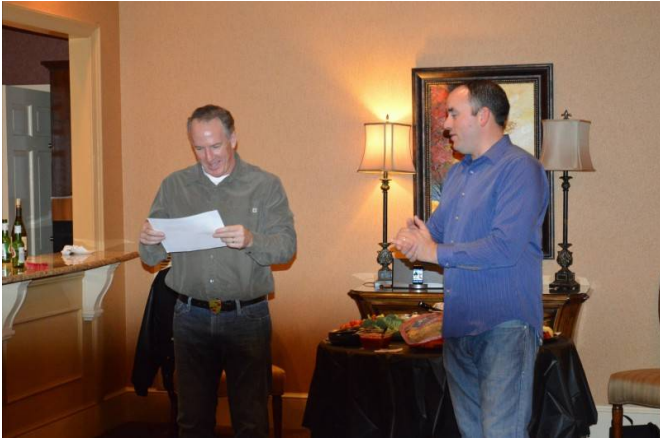


A very interesting desk accessory from Bluegrass Motorsport.



The man with the tickets - a coveted job! :)





The DE Winner!!



Debbie helping Matt with the Money Raffle Drawing.



Jason & The Crystal Porsche



The winner of the smaller of two cash prizes.



The BIG Cash Prize Winner! Thanks everyone for coming and have a safe drive home.

## Monthly Membership Meeting Minutes—February

*By Granger Adams, KY Region Secretary*

**14 Jan 2013**

The meeting was held at Champ's Sports Bar, near Oxmor and was attended by the entire KYPCA Officers, and most Committee Members and Board Members. In total, 28 members were present for the meeting which began at 7 pm. Minutes from the January meeting include:

### **From the President- Matt Innes**

-From National: Porsche reports a record 180,000 unit sales. The Cayenne is a major contributor.

-The After Holiday Party is Jan 19<sup>th</sup>! All

are encouraged to come. We have great door prizes lined up as well as food and drinks.

-If you are looking for a 1970 911T "all original" contact Matt for details.

-The date and location of all 2013 KYPCA club meetings are now set. Look for them on the PaceSetter calendar and KYPCA website.

### **From the Vice President- Jeremy Miller**

-The dates for the two annual Putnam Park DE's are set! June 7-9 and Sep 13-15. Be there, even if just to hang out and mingle. It is an extremely well run event and a great way to learn to really drive your Porsche.

### **Activities Chair- Steven Rountree**

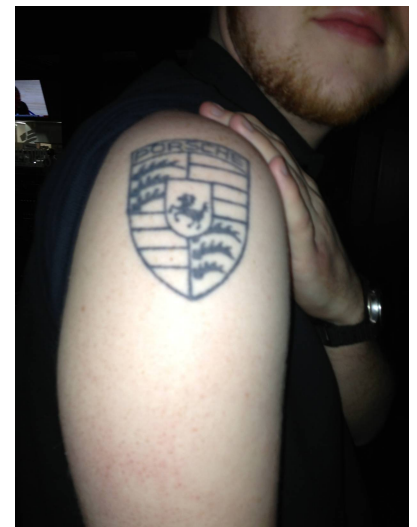
-The activities committee is soliciting for ideas on what we want to do in the club for 2013. If you liked something in the past and want to do it again, or have a great place or drive you would like to share, know of a car event that ties to the club interest call or email a member of the Activities Committee and let them know your ideas.

### **Membership- Gene Hoffman**

-The KYPCA has added two new members. Current membership is at 229 members, with an additional 156 affiliate members.

### **Treasury- Richard Darnell**

This year the Louisville Concours d'Elegance will move to West Baden Springs Hotel in French Lick, Ind. located 90-minutes from Louisville. Stay tuned for club participation.



Our server was a true believer!





# Lichtefeld Incorporated

A Construction and Development Company



Office  
Retail Centers  
Medical  
Churches  
Manufacturing  
Warehouse  
Banks  
Schools



Let Lichtefeld Handle the Business of Building  
While You Handle the Building of Your Business

**Total Turn Key Design/ Build Construction and Leasing. Call for Your Free Estimate/Consultation**

[www.Lichtefeldinc.com](http://www.Lichtefeldinc.com)

Contact: Mark Lichtefeld

502-589-4777

To maintain machines like these...



... Takes skills like ours.

2 locations Middletown 245.3414 Bowman Field 452.9721 [www.steinauto.com](http://www.steinauto.com)



# Saturday Morning Breakfast Social

The breakfast club continues to be a good thing despite the "day off early hour". Most of the turnout is made up of members with older Porsches. 356's, 911's, 912's, 914's & 944's grace the parking lot with a Boxster or a Cayman in the mix to look after the older rides. The owners are really hands-on people with their cars. The conversations over coffee are always geared to what they have done themselves to keep these senior Porsches in first class condition. No dealership repairs for this bunch! The Saturday breakfast participants really are the "Patrons Of Older Porsches".

The menu at Frisch's is extensive, the breakfast bar is wonderful and the coffee is just right. The early time allows everyone time to make it to Cars n Coffee in the East End without rushing. This is a fun bunch of members, come join us. We would enjoy seeing all of you there.

No reservations required, just show up.

Contact Edgar Smiley at 502.939.3595 (cell) or [deKYblugras@aol.com](mailto:deKYblugras@aol.com)

## PACESETTER ADVERTISING RATES

Classified Ads for 'The Mart' are published at no cost to PCA members for 3 months and at nominal cost to non-members. Send copy for ads to the PaceSetter Editor.

Commercial Rates: 1/4 Page \$130, 1/2 Page \$250, Full Page \$500, per year. Quarterly terms are available but require advance payment.

Business card ads are accepted from Kentucky Region members only at \$65 per year. Mail your card and a check made payable to Kentucky Region PCA, to the Pacesetter Editor.

**Central Indiana PCA  
Calendar**  
[www.cirpca.org](http://www.cirpca.org)

***CKR Solo Schedule***

**Central KY Region SCCA**  
Schedule is at: [www.ckrscca.org](http://www.ckrscca.org)



From Gene Hoffman.....

In Istanbul, Thrifty Car Rental rents a 911 for only 1342 Turkish Lira a day (\$758), minimum two days. Think we'll stick to walking. We are on our 40th anniversary celebration trip!

# PEDROSGARAGE

## Drive in the Rain

Published in the July 2010 issue of “Die Porsche Kasette”

### Go Drive in the rain!

“I want more HP to be faster!”

That’s what you generally hear from new students that have done a few DE events. They are under the impression that more horsepower will help them go around the track faster. While in some cases this might be true, such as with very experienced drivers with underpowered cars, generally gobs of horsepower will make them go slower because high power-to-weight ratio cars are much more difficult to drive.

The general advice for becoming a better and faster track driver is the same as when someone asks: “How do I get to Carnegie Hall?”

The answer in both cases is PRACTICE!

Practice certainly makes perfect, and at the track it will make for a smoother, safer and faster driver.

Once a student masters the art of braking, apexing, heel/toeing and accelerating with delicacy he/she will be more consistent and faster.

When we are new at DEs, we tend to be very aggressive with the way we turn the steering wheel, the way we press the brake pedal and the accelerator, thinking that this will make us faster.

In fact, until we can tone down our urge to be violent with the car’s controls, we won’t be as fast as we could be.

Probably the best platform to help you be a smoother driver is by doing it in the rain, or better yet, on ice!

The best DE sessions I’ve ever had, when I’ve learned the most, are under pouring rain. When it’s slick you HAVE to be smooth in the way you drive, or your tires (especially track tires) will be sliding all over the track and the car will not be on it for long.





My very first session after I qualified as a solo driver was under rain, at Home-stead-Miami Speedway. I remember I felt very anxious at first, but as I did some laps it became fun, until I forgot to be smooth with my right foot and... I lost it at turn 13!



Fortunately I was able to maintain the car on the track and there weren't any other cars immediately behind, so I was fine.

After that incident I've learned to be much smoother and my speed has gradually increased even though I haven't increased my horsepower (too much).

I try to picture myself while I'm tracking my car that I'm on wet pavement and that helps me be a lot smoother ... and faster.

In one of the best books I've read, *The Art of Racing in The Rain*, by Garth Stein, Enzo, the narrator of the book says it perfectly:

"I know this much about racing in the rain. I know it is about balance. It is about anticipation and patience. I know all of the driving skills that are necessary for one to be successful in the rain. But racing in the rain is also about the mind! It is about owning one's own body. About believing that one's car is merely an extension of one's body. About believing that the track is an extension of the car, and the rain is an extension of the track, and the sky is an extension of the rain. It is about believing that you are not you; you are everything. And everything is you."

To learn more about High Performance Driving, watch some track videos and more, please visit my website at: [www.PedrosGarage.com](http://www.PedrosGarage.com).

Happy Porscheing,

*Pedro*

©2012 Technolab / PedrosGarage.com

### technolab

Pedro P. Bonilla  
Weston, FL 33327  
(954) 385-0330  
[ppbon@aol.com](mailto:ppbon@aol.com)  
[Pedro@PedrosGarage.com](mailto:Pedro@PedrosGarage.com)  
[www.PedrosGarage.com](http://www.PedrosGarage.com)  
[www.PedrosBoard.com](http://www.PedrosBoard.com)

**Worried about IMS failure?**



We have the **IMS Guardian** DIY Kit in stock, ready to ship. The only engine pre-failure warning system on the market for M96/M97 Porsche engines

The Kit includes a step-by-step DVD installation guide  
Call 954.385.0330 **technolab**/PEDROSGARAGE  
Florida Pre-Purchase Inspections (PPI)

**FREE DIY tutorials and technical info on our website.**

**technolab**  
**PEDROSGARAGE**

We also offer: ECU Tuning, Bored TBs, HID/LED Performance Parts, Brake Caliper Restoration & Painting, AX & DE Magnetic Bras and Numbers, much more.

954.385.0330 • [www.PedrosGarage.com](http://www.PedrosGarage.com)





- Indoor Storage
- We now Mount Tires
- Morning Shuttle Service
- Parts & Service

## **STUTTGART** *Specialists*

4204 Poplar Level Rd.  
Louisville KY 40213  
502.454.5591

# PCA Anniversaries!!

# Welcome New Members!!

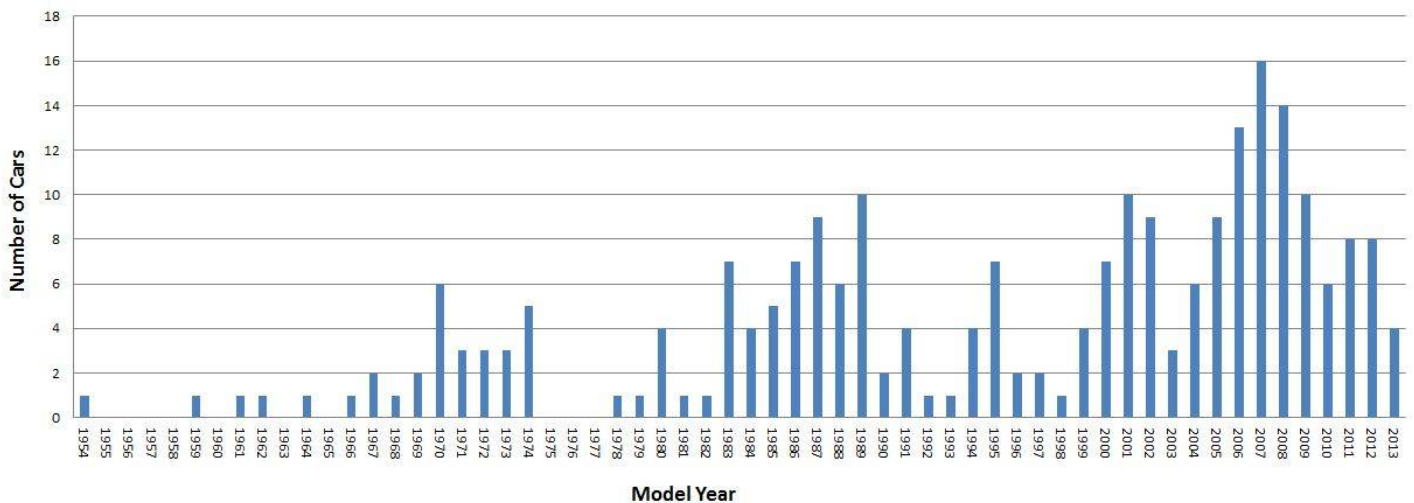
## December 2012

1984 Talamini, Harry A.  
 1990 Campbell, John K. & Cheryl A.  
 2004 Laureano, Romeo N. & Mary Ann  
 2004 Noel, Michael D. & Steve Hennessy  
 2010 Michael, Patrick W. & Pam  
 2010 Petro, Joe III & Rachael Sadinsky  
 2010 Wydotis, Lenny & Heidi  
 2012 Mosier, Joey & Donna  
 2012 Nair, Suresh

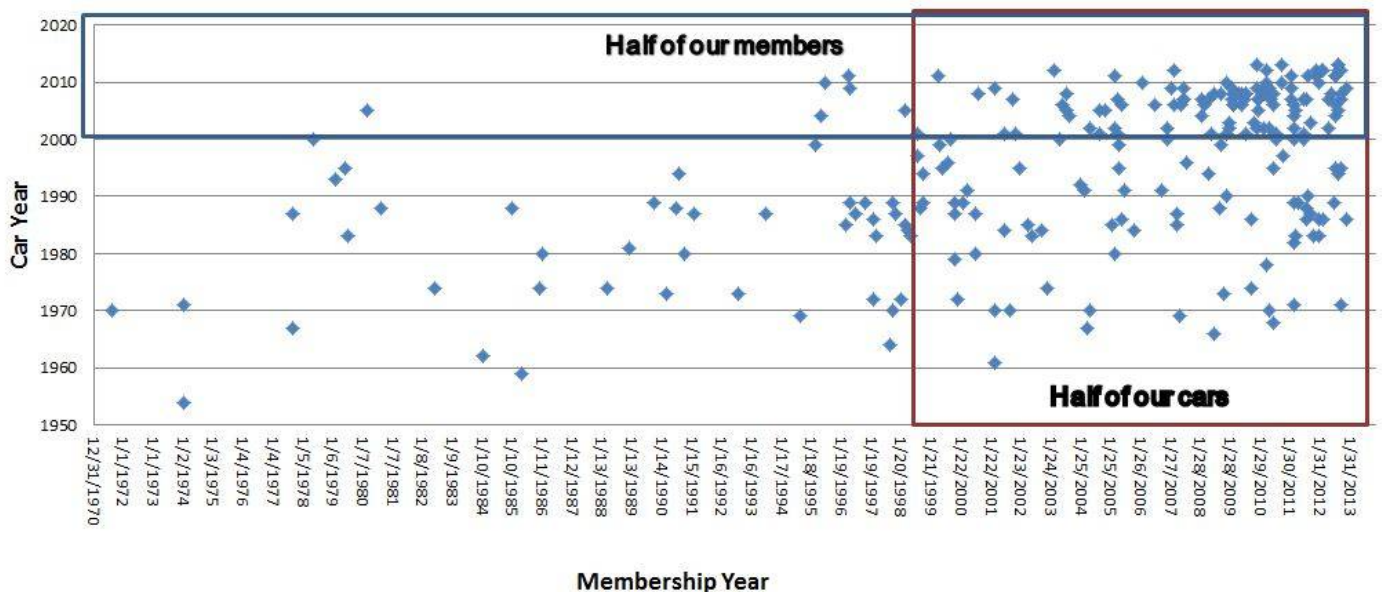
## December 2012

Brounts, Lionel R. & Michelle  
 Elizabethtown, KY  
 2009 Boxster Silver  
  
 Porter, D. Wayne & Sara  
 Louisville, KY  
 1986 928 White

Model Years of KYPCA Member Cars



Who owns what?



# FEBRUARY MEMBERSHIP MEETING

## *Buckhead Mountain Grill*

3020 Bardstown Road  
Louisville, KY 40205  
502-456-6680

<http://www.eatatbuckheads.com/wp-content/uploads/2012/11/197204-Buckheads-Carryout-Menu-Bardstownaug2012.pdf>



Monday  
Feb. 11th  
7:00 PM

## **A Bowling Day at Ten Pin Lanes**

It was mentioned during our January Meeting that we should go bowling...sounds like a fun thing to do in the Winter! We have three lanes reserved at the Ten Pin Lanes in St Matthews, 200 Ten Pin Lane, on Sunday, February 17th from 2-5PM. We must be finished by 5PM because they have leagues arriving for the rest of the day. Each lane can handle up to six people with a cost of \$4 per person per game and the shoe rental is \$3. Since the lanes get busy on Sundays, they have requested for us to confirm our reservation ahead of time. Please **RSVP by 6PM February 13th** by calling me directly, Steven Rountree at 502-386-3001. It's possible to add more lanes if we have a good turnout. First come, first served, so call early!

