

Pace Setter NOVEMBER 2012

2013 KY PCA Officers

On October 8, 2012 the KyPCA Porsche Club met at Bluegrass Motorsports. A quorum elected the 2013 Club Officers.

President: Matt Innes
Vice President: Jeremy Miller
Secretary: Granger Adams
Treasurer: Richard Darnell

Membership: Gene Hoffman
Activities Committee: Steven Rountree, Debbie Schultz, Edgar Smiley, Gene Hoffman

Pacesetter Editor: Belinda Schweinhart
Website Chair: Mark Bos

Board Members: Jason Miller
Mark Bos
Scott Kiser

Thank you,

Jason Miller

KY PCA Website

www.kypca.org

Forums & E-Mail List

Stay informed and participate! Join the KYPCA forums & mailing list and be notified of upcoming events, club news, and membership information.

Remember, it's your participation as a member that makes the club successful.

Please visit the below website and sign-up today!

<http://forums.kypca.org/>

Current Forums List:

- **Let's Go Driving**
- **Want To Sell**
- **Want To Buy**
- **Recycler**
- **Tech Talk**
- **Make It Shine**
- **Track & DE**
- **Autocross**
- **Club News**
- **Off Topic**
- **Member Rides (upload your photos)**

www.kypca.org/news

(club activities, meetings, or general announcements from KY Region PCA, the latest issue of the Pacesetter (our monthly newsletter), announcements of new models, racing news)

www.kypca.org/information

(club specific documents, upcoming club events, frequently asked questions, mailing list sign-up, Web Links)

www.kypca.org/media

(photos and videos from club events (member submitted or just something we think is really cool and Porsche related))

Having trouble viewing the kypca.org website? Do you have a suggestion on how we can improve it? Please send any feedback you might have to feedback@kypca.org.

2012 KENTUCKY REGION PCA OFFICERS & BOARD MEMBERS

President:

Steve McCombs

2603 Foxy Poise Rd.
Louisville, KY 40220
(502) 558-0306
shmc930@hotmail.com

Vice President:

Jeremy Miller

2409 Running Brook Trail
Fisherville, KY 40023
(502) 396-9111
jers993@msn.com

Secretary:

Chad Rainey

3904 Chesley Martin Dr
Louisville Ky 40299
502 439-8251
raineycd@hotmail.com

Treasurer:

Richard Darnell

4100 Narcissus Dr.
Louisville, KY 40219
(502) 889-8120
rdarnell@ayebblink.com

Membership:

Gene Hoffman

1910 Duker Ave
Louisville, KY
(502) 435-4981
rgenehoffman@gmail.com

Activities Chair:

Steven Rountree

(502) 386-3001
smr9463@insightbb.com

PaceSetter Editor:

Belinda Schweinhart

10712 Sun Ridge Rd.
Goshen, KY 40026
(502) 228-9725
article@kypca.org
belinda@lowcarbrecipies.com

Board Members:

Andy Daugherty

(2012-2013)
1283 Farmdale Ave.
Louisville KY 40213
(502) 744-9343
dobie356@msn.com

Mark Lichtefeld

(2012-2013)
5726 Moser Farm Rd.
Prospect, KY 40059
(502) 412-4185
marke@lichtefeldinc.com

Jason Miller (2011-2012)

6607 Westwood Way
Crestwood, KY 40014
(502) 253-5704
millermd@insightbb.com

Past President:

Tony Proasi

1522 McKay Ave.
Louisville, KY 40213
(502) 751-1126
wagwerks@msn.com

Website Chair:

Mark Bos
mbos@bluegrass.net

SW KY Area Rep.

Richard Hughes

981 Dunbarton Ave.
Bowling Green, KY
42104
(270) 991-4848
jrhughes47@hotmail.com

2012 KY Region PCA Calendar

www.kypca.org

Current Events!!	JANUARY	FEBRUARY	MARCH
<p>*****</p> <p style="text-align: center;">NEW LOCATION AGAIN!!</p> <p>*****</p> <p>November 12, 2012 Membership Mtg. August Moon Time: 7:00 PM Contact: Steve McCombs (see page 23)</p> <p>November 17, 2012 Breakfast Social Frisch's Poplar Level Road Time: 9:00 AM- ??? (see page 12)</p> <p>NOTES: Contact Information can be obtained in the news- letter on Page 2.</p> <p>All events are subject to change due to weather and availability.</p>	APRIL	MAY	JUNE
	JULY	AUGUST	SEPTEMBER
	OCTOBER	NOVEMBER	DECEMBER
		<p>10th—Cars `n Coffee (see page 12)</p> <p>12th—Membership Mtg. (see page 23)</p> <p>17th—Breakfast Social (see page 12)</p>	<p>10th—Membership Mtg.</p> <p>15th—Breakfast Social</p>

President's Report

Steve McCombs—KY Region President

This will most likely be my last president's comments column. We've elected new officers for the 2013 year and I truly wish them the best. Our Club is well on its way to being stronger and more financially sound than it's been in a long time. The key reason is our membership and the outstanding job The Kentucky Region DE team has done on putting on an outstanding event each and every time. But with all great events requires outstanding sponsors. Blue Grass Porsche headed by Randy Biery has gone way above and beyond their involvement with our DE events. Many, many thanks go out to them for their strong and continuing support of our Club. Without them these events would not be as awesome as they are.

I would also like to thank my officers for the past two years. They have allowed me to take hold of the wheel and drive it like it's supposed to be driven. A special vote of gratitude goes to Belinda and Mark for doing the thankless jobs of newsletter editor and web master, for without their devoted time we all wouldn't know what's happening in the Club.

In my reflecting back, I have to say that I truly value the long time members of the club and the friendship you all have given me. You are the salt and foundation of the club and the true doers of the club. But the most enjoyment I've had is meeting and getting to know the new members. Your excitement and enthusiasm inspired me to do the best job I could to make meetings and club events interesting and a fun way to spend your valuable time. I hope and trust you felt the same way.

Thanks to all for entrusting to me with the honor of being president of The Kentucky Region PCA for the past two years. I'm not going anywhere (at least I don't think so) but I'll just be another member for a while.

The Best to All,

Steve McCombs (2011-12 President KYPKA)

PORSCHE®

Huber's Winery Drive Photos

By Terrence Morris





Diagnostically speaking, there is no substitute.

The best equipment. And the best minds trained to use it. These are your Porsche certified technicians. Dedicated to Porsche vehicles above all else, they must complete over 80 hours a year training in the latest diagnostic technology and techniques. You'll also take comfort knowing all Porsche genuine parts are factory-backed for two years when installed by your authorized dealer. Better still, there is no substitute for having your vehicle serviced by professionals who not only know Porsche, but live Porsche every day.

Porsche Certified Service.

Blue Grass Motorsport
4720 Bowling Blvd.
Louisville KY 40207
502-515-5881

Porsche recommends **Mobil 1**



PORSCHE

Photos from the Drive to Elk Creek Vineyards

By Holly Miller



On 22 making our way to Elk Creek Winery.



Coming up on the Elk Creek Lodge & Shooting Range.



What a view!



6 of the 7 Porsches who made the drive.



Elk Creek Vineyards



A very cool way to transport wine . . .



The beautiful view from the patio.



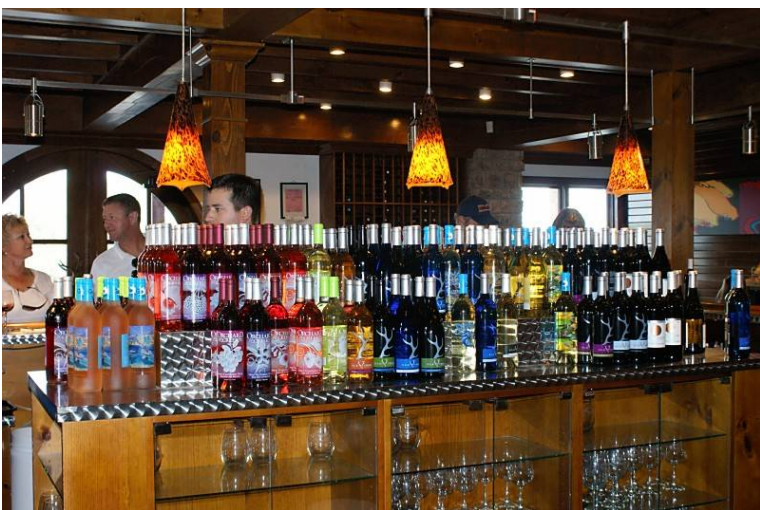
A view of the Lodge & Shooting Range from the Vineyard.



The KY PCA Attendees



Steven, Jason & Grace after our tour.



The Wine Bar





Grapes



Vines near the main building.



Elk Creek Vineyard



Lichtefeld Incorporated

A Construction and Development Company



Office
Retail Centers
Medical
Churches
Manufacturing
Warehouse
Banks
Schools



Let Lichtefeld Handle the Business of Building
While You Handle the Building of Your Business

Total Turn Key Design/ Build Construction and Leasing. Call for Your Free Estimate/Consultation

www.Lichtefeldinc.com

Contact: Mark Lichtefeld

502-589-4777

To maintain machines like these...



... Takes skills like ours.

2 locations Middletown 245.3414 Bowman Field 452.9721 www.steinauto.com





Another travel report.....

I was inspired by the October *Pacesetter* to do a little exploring. Russ Hurst provided us with a first-hand picture of the Porsche dealer in Dubai, UAE. Being in the neighborhood at the time, daughter Beth Bynum (affiliate member with husband Matt) and I found the Porsche dealer in Doha, Qatar where we were on a business trip. Unfortunately, it was closed and there was only one car in the lot. Too hot to shop outside, I guess. There were however lots of Cayennes on the roads. With high incomes and gas at about a dollar a gallon, luxury SUVs are very popular. Gene Hoffman

Worried about IMS failure?



We have the **IMS Guardian** DIY Kit in stock, ready to ship. The only engine pre-failure warning system on the market for M96/M97 Porsche engines

The Kit includes a step-by-step DVD installation guide

Call 954.385.0330 **technolab/PEDROSGARAGE**
Florida Pre-Purchase Inspections (PPI)

FREE DIY tutorials and technical info on our website.

technolab
PEDROSGARAGE

We also offer: ECU Tuning, Bored TBs, HID/LED Performance Parts, Brake Caliper Restoration & Painting, AX & DE Magnetic Bras and Numbers, much more.

954.385.0330 • www.PedrosGarage.com

PACESETTER ADVERTISING RATES

Classified Ads for 'The Mart' are published at no cost to PCA members for 3 months and at nominal cost to non-members. Send copy for ads to the PaceSetter Editor.

Commercial Rates: 1/4 Page \$130, 1/2 Page \$250, Full Page \$500, per year. Quarterly terms are available but require advance payment.

Business card ads are accepted from Kentucky Region members only at \$65 per year. Mail your card and a check made payable to Kentucky Region PCA, to the PaceSetter Editor.

Saturday Morning Breakfast Social

The breakfast club continues to be a good thing despite the "day off early hour". Most of the turnout is made up of members with older Porsches. 356's, 911's, 912's, 914's & 944's grace the parking lot with a Boxster or a Cayman in the mix to look after the older rides. The owners are really hands-on people with their cars. The conversations over coffee are always geared to what they have done themselves to keep these senior Porsches in first class condition. No dealership repairs for this bunch! The Saturday breakfast participants really are the "Patrons Of Older Porsches".

The menu at Frisch's is extensive, the breakfast bar is wonderful and the coffee is just right. The early time allows everyone time to make it to Cars n Coffee in the East End without rushing. This is a fun bunch of members, come join us. We would enjoy seeing all of you there.

No reservations required, just show up.

Contact Edgar Smiley at 502.939.3595 (cell) or deKYblugras@aol.com

Cars n Coffee

By Steven Rountree

Cars n Coffee is always held on the **second Saturday from 9-11AM**, but now in the parking lot of **Captain's Quarters** on River Road in Prospect. It has been mentioned that breakfast may be available. Everything else is the same...this casual meeting involves anyone interested in all types of cars. It's a free event, however it is a benefit for Dystonia, so please make a donation and/or buy some coffee/breakfast to support the cause. It is weather-pending, but only depending on what conditions you're willing to bring out your Porsche. Just show-up whenever you can. Who knows, maybe some of us will go for a drive afterwards?

Please do not speed and/or do burnouts when leaving this event. It could become very dangerous and Captain's Quarters will not tolerate it.

Steven Rountree 502-386-3001

Central Indiana PCA
Calendar
www.cirpca.org

CKR Solo Schedule

Central KY Region SCCA
Schedule is at: www.ckrscca.org

Concours D'Elegance Photos by Holly Miller



A line-up of Porsches arrive at Papa Johns Stadium, beginning with this classic Porsche.



With the help of white 'Year' cards for each car, the KY PCA Group is lined up and ready to enter Churchill Downs.



Panoramic Line Up



Watch those low-profile ground effects when entering the tunnel!



The late 2000's - lookin' good!



The cars drive off in order of oldest to newest model year.



Looking good as they arrive in the Infield!



Now at Churchill Downs, the club can see their meeting place, Papa Johns Stadium, in the distance.



Beautiful & Fast!!



Two Porsches with a nice view of the Twin Spires.

Twin Spires





Panoramic View of The Club parked in front of the Twin Spires.



Wheels



Oldest to Newest



Bad News!



The KY PCA Owners



Two Porsche Drivers 'In-Training'



2012 Louisville Concours



A classic 1955 Porsche in competition.



The Porsche Racing Class



Awesome!



Porsche Racing had a very nice spot in the show.



Class 10 - Porsche Racing



Racing Restore and 2nd Place Ribbon.



Lunch Anyone?



Another Beautiful Sunny Day to enjoy some beautiful cars!

THE MART

The Mart Rules

The Mart Ads are free to all PCA members. **It will appear for TWO issues and can be relisted by contacting the newsletter editor.**
All ads must be car related.

To place an advertisement in "The Mart" contact the PaceSetter editor.

Cars for Sale

2001 Porsche Twin Turbo; 81,XXX miles; new clutch, Michelin Pilot Sports; Evoms 750 kit; never been on track; have all records; excellent condition; \$39,500. Contact David Sarten 270-748-5098 or disarten@ken-tennwireless.com



PCA Anniversaries!!

September 2012

1977 Mayes, Richard F. & Susan
1991 Sermersheim, David P. & Minda
1997 Klamer, Thomas W.
1998 Lichtefeld, Mark & Jennifer
2002 White, Jeff N. & Holly
2006 Croucher, Michael R. & Edward Croucher
2009 Arnold, Sandra K.
2011 Gibson, Glen R.
2011 Schultz, Debbie R. & Linda Riggle

Welcome New Members!!

September 2012

Pete B. Hoechner
Bowling Green, KY
1994 968 Red

Robert M. Klein
Louisville, KY
2013 Boxster Red

Stan Snyder
Louisville, KY
2005 911 Turbo S Silver

Robert D. Thomas
Louisville, KY
2013 Boxster S Silver
Transfer from: Bluegrass (BGS)

Ty Wilburn
Prospect, KY
2012 911S Gray

PEDROSGARAGE

Coolant / Antifreeze

Published in the September 2011 issue of "Die Porsche Kasette"

Once upon a time you could only use Porsche coolant in your water-cooled Porsche, but times and products have changed and now you have a choice ... several, actually.

I know you've heard the stories about how your coolant will turn to gel if you put something else in there other than genuine Porsche coolant, but if you have a little patience and read on, I'll give you the skinny. For those of you with "real" air cooled Porsches, thank you for reading this far, but you've read enough. See you next issue ;)

Logically, you'd think that a "wasserboxer" engine (water cooled boxer engine) would be cooled with wasser (water) right? Not exactly. And why does it need to be water cooled, anyway?

A typical, 6 cylinder Porsche cruising at around 70 mph (3,350 RPM) will produce 10,050 controlled explosions per minute inside the engine, as the spark plugs ignite the fuel/air mixture in each cylinder. Obviously, these explosions produce an enormous amount of heat, and if not controlled, will destroy the engine in a matter of minutes. Historically there have been 2 choices for controlling this heat: air and water cooling. The original Porsche engines were all air-cooled, but with the advent of more strict environmental regulations it became more efficient to use water instead of air to cool the engines and now all internal-combustion engines in Porsches are water cooled.

Pure water is probably the best fluid for holding and transferring heat, but it has three problems. It freezes at 32° F which causes it to become solid and expand, thus cracking the engine, it boils at 212° F turning into vapor at too low a temperature considering those generated by the internal combustion engine, and pure water running through the cooling system would promote internal galvanic corrosion.

So, science came to the rescue. By adding a chemical product known as **Ethylene Glycol** (C₂H₆O₂) to pure water, it changes the freezing and boiling points of the new fluid, now known as antifreeze or coolant.

	Pure water	50/50 C ₂ H ₆ O ₂ / H ₂ O	70/30 C ₂ H ₆ O ₂ / H ₂ O
Freezing Point	32° F (0 °C)	-35° F (-37 °C)	-55° F (-67 °C)
Boiling Point	212° F (100 °C)	223° F (106 °C)	235° F (113 °C)

Adding Ethylene Glycol obtained the needed anti-freezing qualities, but the coolant still boiled at too low a temperature. So again, science to the rescue. By pressurizing the system to a safe pressure of 14.7 psi the boiling temperature of the coolant is now raised another 45° F (25° C) so the coolant can withstand the higher temperatures without boiling.

Coolant or antifreeze, has four (4) basic functions it must provide:

- 1.- It must carry heat from the engine to the radiators where it will be dissipated
- 2.- It must not freeze in the winter and must not boil in high temp environments
- 3.- It must lubricate the system's moving parts such as the water pump, and
- 4.- It must protect the cooling system against corrosion

There are 3 basic types of coolants based on the different types of additives used: Inorganic Additive Technology (IAT), Organic Additive Technology (OAT) and Hybrid Organic Additive Technology (HOAT). Although, technically each one of these would work on any automotive cooling system, each one was developed to meet specific manufacturer's needs.

IAT has been around since the first water cooled engines. It contains silicates and or phosphates that form a protective barrier on everything in the cooling system, even on the hoses. IAT coolant is generally recommended for iron-block and heavy-duty engines.

OAT coolants work differently. Aluminum and ferrous metals form a surface-layer of corrosion in the presence of moisture. OAT coolants anneal (transform by the engine's heating and cooling cycles) this metal-oxide layer into a thin surface coating that protects against further corrosion. OAT coolant is what's in our engines because most of the components are aluminum.

HOAT are hybrid coolants that use both silicate and organic acid corrosion inhibitors, generally recommended for engines that have iron-blocks and aluminum heads.

The recommended antifreeze for our Porsche vehicles is the OAT type. Many of the famous, over-the-counter brands offer OAT coolant with an aluminum-protecting inhibitor package and contain no silicates, borates or phosphates and will be stated as such on their labels. Generally these are called **"Extended Life Antifreeze Coolant"**.





These coolants can be put on top of the existing Porsche coolant, if needed for a top off, even if it's a different color, and although Porsche sells it's coolant as a lifetime product, whenever there's a need to service any cooling system component, such as a radiator, a cooling line, the thermostat or the water pump, for which the system must be drained, fresh coolant mix should be used to ensure that the additives are there in the necessary quantities to protect the newly installed surfaces.

As we saw in the table (above) the recommended mix for most of us in the lower 48 is a 50/50 mix of antifreeze and water. Because tap water contains many minerals and chemicals which could reduce or eliminate the wanted effects of the additives, it is highly recommended that distilled water be used for the dilution. You can purchase an already diluted 50/50 mix from most of the antifreeze manufacturers, but it is generally cheaper if you make the mix yourself and you can also adjust the proportion to your specific needs.

Check you coolant level frequently. If you notice a drop in level (from cold to cold) check your coolant cap. Chances are it's an old (even an original) cap which needs to be replaced after 4 or 5 years, since it can lose it's pressure-holding ability. If you need to top off, it's fine to do it with just distilled water. You don't need to use mix, not for a small amount.

The Ethylene Glycol used in coolant is poisonous to humans and pets. Take all necessary precautions.

To obtain additional information about antifreeze / coolant, cooling systems and more, please visit my website at: www.PedrosGarage.com.

Happy Porsche-ing

Pedro

technolab

Pedro P. Bonilla
Weston, FL 33327
(954) 385-0330
ppbon@aol.com
Pedro@PedrosGarage.com
www.PedrosGarage.com
www.PedrosBoard.com



- Indoor Storage
- We now Mount Tires
- Morning Shuttle Service
- Parts & Service

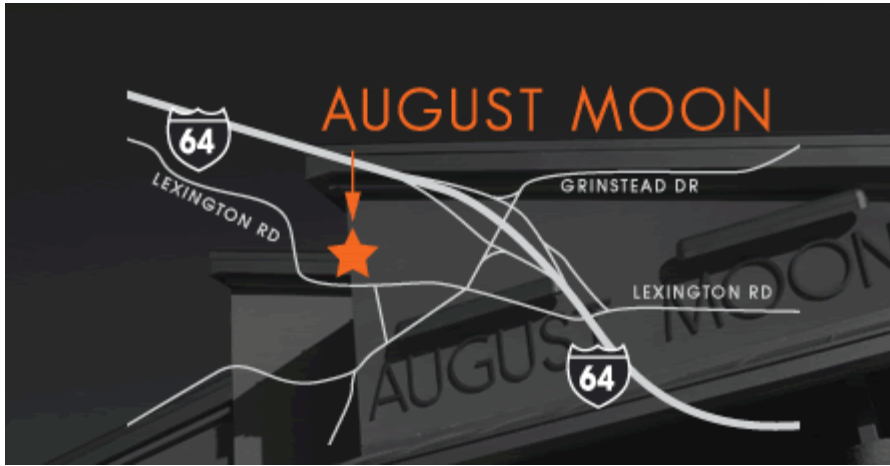
STUTTGART *Specialists*

4204 Poplar Level Rd.
Louisville KY 40213
502.454.5591

NOVEMBER MEMBERSHIP MEETING

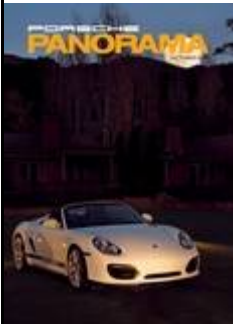
AUGUST MOON

2269 Lexington Road
Louisville, KY 40206
502-456-6569



Monday
Nov. 12th
7:00 PM

Ballot for PCA National Officers are enclosed in the October 2012 Panorama issue PCA



BALLOT
MUST BE RECEIVED BY NOVEMBER 30, 2012

	MEMBER	FAMILY
Wenny Altier		
Chris Cooper		
Sean Reardon		
Tom Dornau		

Ballot for National Officers, PCA, for a two-year term, 2013-2014. Candidates are listed for each office, along with a space for a vote for one candidate for each office. The ballot register may contain names and printed region names that are not included in this ballot. If you are not a member, your ballot may be voided.

MEMBER Signature: _____
Printed Name: _____

FAMILY
MEMBER Signature: _____
Printed Name: _____

REGION NAME: _____

The October issue of Panorama includes a Notice of Election for the 2013-2014 term. Candidate descriptions and a tear out ballot are provided. We encourage you take a minute to VOTE and show your support of the volunteers. Ballots must be received by Nov. 30, 2012.