

Pace Setter

JUNE 2012

Parade—It's Not Too Late to Join the Fun!!

The 57th annual Porsche Parade will be held July 8-14, 2012 in Salt Lake City, Utah, and there is still time to join us. Parade registration may be accessed by logging into your pca.org account and following the links.



Salt Lake, known as the "Crossroads of the West," is a fun, family friendly city with theatre, restaurants, nightclubs, museums, and more.

The weather should be hot, but dry and sunny. In other words-summer time!

In addition to all the fun you can have in the city and surrounding areas, we of course have a full week of Parade activities lined up for you. There is still room to join in any or all of the four competitive events: Concours, Autocross, TSD Rally and Tech Quiz. We have beer and wine tasting events in Hospitality, our Art show, a 5k run/walk, golf tournament, gimmick rally, banquets, RC car races and the Michelin Drive & Compare. Tech Academy will be held on Friday, with plenty of hands-on instruction about do-it-yourself maintenance. The local region, Intermountain, will round out the week with a DE at nearby Miller Motorsports Park.

For more information about the week, go to our website: <http://parade2012.pca.org/>. Our headquarters hotels will be the Little America and Grand America Hotels. Located in the middle of downtown, the hotels are on a light rail line, making it easy to get around the city. Little America has Salt Lake City's largest indoor/outdoor pool, and both have extensive underground parking areas. Within easy walking distance is Salt Lake City's newest mall (it just opened this March)-City Creek Center. Spread across three blocks in downtown Salt Lake City, City Creek Center has eighty stores and restaurants either open-air or covered by a retractable roof.

About a mile from the hotel is Utah's state Capitol, where we will hold the Concours. The Capitol was built on a hill overlooking the city, and is the perfect place for you to show off your "baby". The Autocross and the Michelin Drive and Compare will be held at Maverick Center, a 10 minute drive away.

The week promises to be an exciting one. Come celebrate 57 years of club history, and your chance to experience all that Salt Lake City and Utah have to offer.

KY PCA Website

www.kypca.org

Forums & E-Mail List

Stay informed and participate! Join the KYPCA forums & mailing list and be notified of upcoming events, club news, and membership information.

Remember, it's your participation as a member that makes the club successful.

Please visit the below website and sign-up today!

<http://forums.kypca.org/>

Current Forums List:

- **Let's Go Driving**
- **Want To Sell**
- **Want To Buy**
- **Recycler**
- **Tech Talk**
- **Make It Shine**
- **Track & DE**
- **Autocross**
- **Club News**
- **Off Topic**
- **Member Rides (upload your photos)**

www.kypca.org/news

(club activities, meetings, or general announcements from KY Region PCA, the latest issue of the Pacesetter (our monthly newsletter), announcements of new models, racing news)

www.kypca.org/information

(club specific documents, upcoming club events, frequently asked questions, mailing list sign-up, Web Links)

www.kypca.org/media

(photos and videos from club events (member submitted or just something we think is really cool and Porsche related))

Having trouble viewing the kypca.org website? Do you have a suggestion on how we can improve it? Please send any feedback you might have to feedback@kypca.org.

KENTUCKY REGION PCA OFFICERS & BOARD MEMBERS

President:

Steve McCombs

2603 Foxy Poise Rd.
Louisville, KY 40220
(502) 558-0306
shmc930@hotmail.com

Vice President:

Jeremy Miller

2409 Running Brook Trail
Fisherville, KY 40023
(502) 396-9111
jers993@msn.com

Secretary:

Chad Rainey

3904 Chesley Martin Dr
Louisville Ky 40299
502 439-8251
raineycd@hotmail.com

Treasurer:

Richard Darnell

4100 Narcissus Dr.
Louisville, KY 40219
(502) 889-8120
rdarnell@ayebblink.com

Membership:

Tony Proasi

1522 McKay Ave.
Louisville, KY 40213
(502) 751-1126
wagwerks@msn.com

Activities Chair:

Steven Rountree

(502) 386-3001
smr9463@insightbb.com

PaceSetter Editor:

Belinda Schweinhart

10712 Sun Ridge Rd.
Goshen, KY 40026
(502) 228-9725
article@kypca.org
belinda@lowcarbrecipies.com

Board Members:

Andy Daugherty

(2012-2013)
1283 Farmdale Ave.
Louisville KY 40213
(502) 744-9343
dobie356@msn.com

Mark Lichtefeld

(2012-2013)
5726 Moser Farm Rd.
Prospect, KY 40059
(502) 412-4185
marke@lichtefeldinc.com

Jason Miller (2011-2012)

6607 Westwood Way
Crestwood, KY 40014
(502) 253-5704
millermd@insightbb.com

Past President:

Tony Proasi

1522 McKay Ave.
Louisville, KY 40213
(502) 751-1126
wagwerks@msn.com

Website Chair:

Mark Bos
mbos@bluegrass.net

SW KY Area Rep.

Richard Hughes

981 Dunbarton Ave.
Bowling Green, KY
42104
(270) 991-4848
jrhughes47@hotmail.com

2012 KY Region PCA Calendar

www.kypca.org

Current Events!!	JANUARY	FEBRUARY	MARCH
*****	APRIL	MAY	JUNE
<p>NEW LOCATION AGAIN!!</p> <p>*****</p> <p>June 11th, 2012 Membership Mtg. Time: 7:00 PM 502 Auto Club Contact: Steve McCombs (see page 18)</p> <p>June 16th, 2012 Breakfast Social Frisch's Poplar Level Road Time: 9:00 AM- ???:?? (see page 6)</p> <p>NOTES: Contact Information can be obtained in the newsletter on Page 2.</p> <p>All events are subject to change due to weather and availability.</p>			<p>8-10th—DE Event Putnam Park (see page 4)</p> <p>8th-Stoddard Swap Meet (see page 18)</p> <p>9th-Cars n Coffee (see page 6)</p> <p>11th—Membership Mtg.</p> <p>16th—Breakfast Social</p>
	JULY	AUGUST	SEPTEMBER
	<p>8th-14th—Parade</p> <p>9th—Membership Mtg.</p> <p>14th—Breakfast Social</p> <p>14th-Cars n Coffee</p> <p>21st-Keeneland Concours</p> <p>27th-29th—Drive Porsches to Ohio</p>	<p>11th-Cars n Coffee</p> <p>13th—Membership Mtg.</p> <p>18th—Breakfast Social</p>	<p>8th-Cars n Coffee</p> <p>10th—Membership Mtg.</p> <p>14-16th—DE Event Putnam Park</p> <p>15th—Breakfast Social</p>
	OCTOBER	NOVEMBER	DECEMBER
	<p>7th-Churchill Down Concours</p> <p>8th—Membership Mtg.</p> <p>13th—Breakfast Social</p> <p>13th-Cars n Coffee</p> <p>13th-Drive Huber's Winery</p>	<p>12th—Membership Mtg.</p> <p>17th—Breakfast Social</p>	<p>10th—Membership Mtg.</p> <p>15th—Breakfast Social</p>

KYPCA Drivers Education

2012 Schedule—June 8-10 & September 14-16

Putnam Park Road Course

www.KYPCA.org



WHAT IS DRIVERS ED? - This program is designed to afford participants the opportunity to develop car control and other essential driving skills in an organized manner. People of various skill levels attend these events for a variety of reasons. The common denominator is that they have a great time and learn from their experience. Safety of participants and their cars is our number one concern.

WHY DRIVERS ED? - The principal reasons for Driver Education are to make all of us who participate more skilled and safer drivers and to provide us with the opportunity to learn about our cars and to experience "driving in its purest form". The fact that this happens to be an incredible amount of fun is quite an extra bonus.

Registration opens approximately 4-5 weeks prior to the event.



Go to www.MotorSportReg.com to register.



Lichtefeld Incorporated

A Construction and Development Company



Office
Retail Centers
Medical
Churches
Manufacturing
Warehouse
Banks
Schools



Let Lichtefeld Handle the Business of Building
While You Handle the Building of Your Business

Total Turn Key Design/ Build Construction and Leasing. Call for Your Free Estimate/Consultation

www.Lichtefeldinc.com

Contact: Mark Lichtefeld

502-589-4777

To maintain machines like these...



... Takes skills like ours.

2 locations Middletown 245.3414 Bowman Field 452.9721 www.steinauto.com



Cars n Coffee - NEW LOCATION!!!

By Steven Rountree

Cars n Coffee is always held on the **second Saturday from 9-11AM**, but now in the parking lot of **Captain's Quarters** on River Road in Prospect. It has been mentioned that breakfast may be available. Everything else is the same...this casual meeting involves anyone interested in all types of cars. It's a free event, however it is a benefit for Dystonia, so please make a donation and/or buy some coffee/breakfast to support the cause. It is weather-pending, but only depending on what conditions you're willing to bring out your Porsche. Just show-up whenever you can. Who knows, maybe some of us will go for a drive afterwards?

Steven Rountree 502-386-3001

Saturday Morning Breakfast Social

The breakfast club continues to be a good thing despite the "day off early hour". Most of the turnout is made up of members with older Porsches. 356's, 911's, 912's, 914's & 944's grace the parking lot with a Boxster or a Cayman in the mix to look after the older rides. The owners are really hands-on people with their cars. The conversations over coffee are always geared to what they have done themselves to keep these senior Porsches in first class condition. No dealership repairs for this bunch! The Saturday breakfast participants really are the "Patrons Of Older Porsches".

The menu at Frisch's is extensive, the breakfast bar is wonderful and the coffee is just right. The early time allows everyone time to make it to Cars n Coffee in the East End without rushing. This is a fun bunch of members, come join us. We would enjoy seeing all of you there.

No reservations required, just show up.

Contact Edgar Smiley at 502.939.3595 (cell) or deKYblugras@aol.com

Central Indiana PCA
Calendar
www.cirpca.org

CKR Solo Schedule

Central KY Region SCCA
Schedule is at: www.ckrscca.org

Classic Movie Night—Saturday May 12 Photos by Holly Miller

Despite the cool, damp weather, the Classic Movie Night went on as planned on Saturday, May 12th. For those that don't know, one of our members, Mark Lichtefeld, owns one of the Cabooses on the back-side of Papa John's Stadium. Once a year, he invites our Club to have a Classic Movie Night with a cook-out. We had 18 or so people, including some kids, for an evening of grilled food and watching the classic, funny movie, Cannonball Run. By the time the movie started light rain had moved in so we had to watch under the portable gazebos, but it was still a good time. A big, "Thank You", goes out to Mark for hosting the Classic Movie Night again, and to Richard Darnell for helping to get it set up and broken down. Next year....



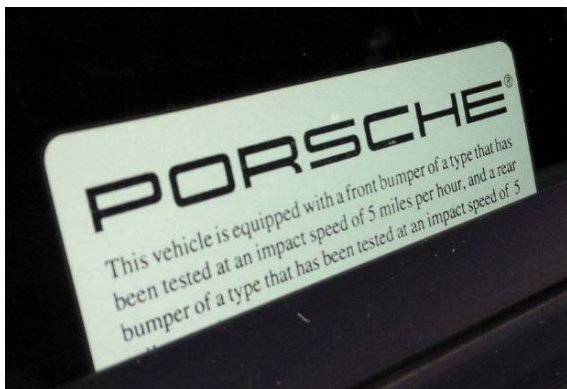
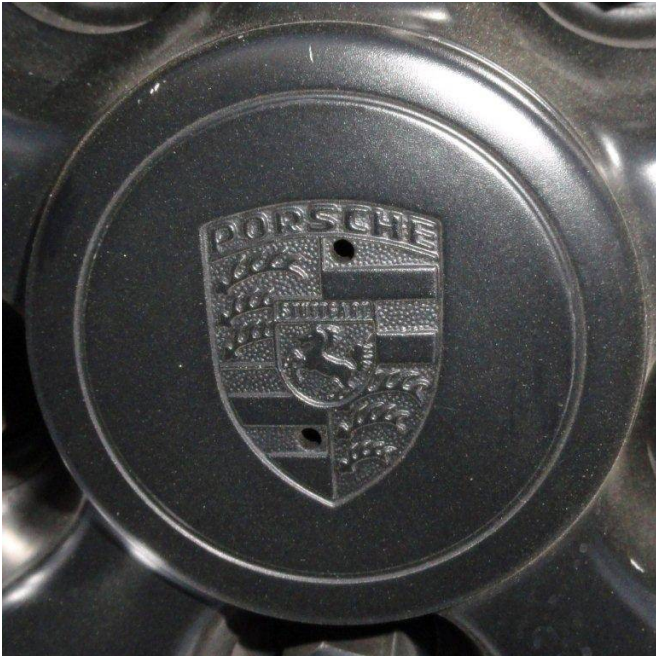


May Membership Meeting Photos by Holly Miller

A very special, "Thank You", should go to Matt and Lucy Innes for inviting our Club to hold our Monthly Meeting in May at their home for a cookout. I was unable to attend, but I've heard that a great time was had by all. What a great idea, Thanks again!

On that note, if anyone has an idea of something fun that our Club might want to do, please come forward with your idea. Maybe you would like to host an event, or you know of a great place to drive our Porsches.... It's not my Club, it's OUR Club, so please participate.

Steven Rountree



Porschesaurus

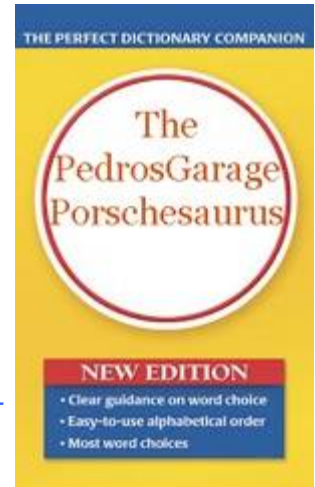
Published in the February 2012 issue of "Die Porsche Kasette" by Pedro P. Bonilla (GCR PCA)

OMG, R U up 2 speed on your abbrs.?

We live in an abbreviated-crazy culture, and the automotive world, with Porsche in particular, is even worse!

It seems as if every different system has an acronym or an abbreviation and new ones are introduced with every model year, so I decided to try to put together our very own Porschesaurus which includes many of the most used ones.

- A** Amperes (*unit of measure for an electrical current*)
- ABD** Automatic Brake Differential (*anti spin control for the drive wheels*)
- ABS** Anti-lock Braking System (*this technology maintains maximum tire traction while braking*)
- AFR** Air-to-Fuel Ratio (*also known as Stoichiometric point – 14.7 parts of air to 1 part gasoline by weight*)
- AGM** Absorbed Glass Matt (*no maintenance type of battery such as the Optima*)
- AIR** Secondary Air Injection (*additional pollution control on cold startup*)
- ASR** Anti-Slip Regulation (*prevents excessive slip on the drive wheels*)
- AWS** Auto Weight-Sensing (*controls air bag deployment based on passenger's weight*)
- AX** Auto Cross (*timed competition through a defined course, against the clock*)
- BARO** Barometric Pressure Sensor (*self explanatory*)
- BHP** Brake Horse Power (*an engine's horsepower before loss to the secondary systems*)
- BPS** Barometric Pressure Sensor (*self explanatory*)
- BOX** Boxer (*type of engine with 2 banks facing each other at an angle of 180°, slightly staggered*)
- C** Celsius (*unit of temperature measurement where water freezes at 0C and boils at 100C*)
- CAFÉ** Corporate Average Fuel Economy (*US Regulations aimed at automotive fuel economy*)
- CAI** Cold Air Intake (*way to deliver cold -outside- air to an engine to make more power*)
- CARB** California Air Resources Board (*California's Clean air Agency*)
- CAT** Catalytic Converter (*automotive system that clean exhaust gasses by chemical reactions*)
- CCA** Cold Cranking Amps (*the amount of current a battery can produce at 0°F / -18°C*)
- Cd** Coefficient of Drag - also Cx, CoD and Cx (*used to quantify the drag or resistance of an object*)
- CDI** Capacitor Discharge Ignition (*automotive electronic ignition which replaced inductance coils*)
- CEL** Check Engine Light (*self explanatory - same as MIL*)
- CL** Closed Loop (*self explanatory*)
- CLU** Central Locking Unit (*unit that controls the locking and alarm systems in a Porsche*)
- DOHC** Double Overhead Cam (*engine with dual cams in which each operate the intake or exhaust valves*)
- DOT** Department Of Transportation (*oversees federal highway, air, rail and other transportation*)
- dB** Decibels (*unit of measure in acoustics, electronics and control theory*)
- DE** Driver Education (*a safe, structured and controlled teaching and learning environment on the track*)
- DFI** Direct Fuel Injection (*a system that injects the fuel directly into the combustion chamber*)
- DME** Digital Motor Electronics (*engine Management System built by Bosch for Porsche automobiles*)
- DTC** Diagnostic Trouble Code (*diagnostic Error Code used by the On-Board Diagnostic (OBD-II) System*)



EACV Electronic Air Control Valve (*also known as the Idle Control Valve*)

ECL Engine Coolant Level (*self explanatory*)

ECM Engine Control Module (*same as ECU*)

ECTS Engine Coolant Temperature Sensor (*self explanatory*)

ECU Electronic Control Unit (*same as ECM*)

EDC Engine Drag Control (*prevents all driven wheels from locking up when the vehicle is overrunning*)

EECS Evaporative Emission Control System (*traps and stores evaporative emissions from the gas tank*)

EVAP EVAPorative emission system (*same as above*)

F Fahrenheit (*unit of temperature measurement where water freezes at 32°F and boils at 212°F*)

FCHV Fuel Cell Hybrid Vehicle (*a vehicle that combines electric and fuel-driven mechanisms*)

ft.lb. Foot-Pound (*a unit of measure of torque – rotational force*)

GT Gran Turismo (*Grand Tourer – performance car designed for long distance driving*)

GTS Gran Turismo Sport (*as above, but a 4 door saloon*)

GTS Gran Turismo Spyder (*as above, but a 2 door Spyder*)

GTR Gran Turismo Racing (*as the Porsche GT-3 R*)

HBA Hydraulic Brake Assist (*assists the driver in an emergency or panic-braking situation*)

HEV Hybrid Electric Vehicle (*a vehicle that uses two types of power, one of them being electric*)

HFC High Flow Cats (*catalytic converter with freer flowing cells, generally for racing*)

HP HorsePower (*unit of measure for power, generally for engines*)

HVAC Heating, Ventilation and Air-Conditioning (*self explanatory*)

IACV Idle Air Control Valve (*air valve in the throttle body which controls the engine's idle speed*)

IAT Intake Air Temperature (*temperature of the air as it flows into the engine – colder means more power*)

IC Ignition Control (*the system responsible for igniting the air/fuel mixture in the engine*)

IC Inter Cooler (*mechanical device used to cool a fluid, generally air on an engine's turbocharger*)

ILSAC International Lubricant Standardization and Approval Committee (*Motor Oil standards*)

in Inches (*unit of measure for length*)

in. lbs. Inch Pounds (*unit of measure for torque*)

ITB Individual Throttle Bodies (*individual – one-per-cylinder – throttle body stacks*)

IMS Intermediate Shaft (*engine shaft which turns the timing chains on Porsche engines*)

KESSY Keyless Entry, Start and exit System (*self explanatory*)

L Liter (Litre) (*unit of measuring displacement in an engine and unit of liquid measurement*)

lb./ft. Pound Feet (*unit of measuring torque*)

LCD Liquid Crystal Display (*flat panel display that uses light modulating properties of liquid crystal*)

LED Light Emitting Diode (*a semiconductor light source*)

LSA Lightweight, Stable, Agile (*sub-frame-mounted rear suspension*)

LSD Limited-Slip Differential (*differential that can alleviate wheel spin while cornering*)

LWB Long Wheelbase (*vehicle with a longer distance between front and rear wheel than a comparison model*)

MAF Mass Air-Flow (*sensor that determines the amount of air being fed into the engine*)

MCD Magnetic Chip Detector (*sensor that can detect ferrous metal chips in an engine's oil*)

MIL Malfunction Indicator Lamp (*self explanatory - same as CEL*)

MON Motor Octane Number (Gasoline Grade) (*type of octane-rating for gasoline grades*)

MOST Media Orientated Systems Transport bus (*automotive high-speed multimedia network technology*)

MT Manual Transmission (*a.k.a. manual gearbox or standard transmission*)

MY Model Year (*model availability date – traditionally begins with the 4th quarter of the preceding year in USA*)

Mxxxx Motorcycle (**yyyy**) (Helmet Safety Standard) (*nomenclature to identify motorcycle helmet safety*)

NHTSA National Highway Traffic Safety Administration (*directs highway safety and consumer programs*)

Nm Newton-Meter (*unit of measuring torque*)

O2 Oxygen (*self explanatory*)

OBC On-Board Computer (*offers information to driver regarding vehicle parameters, consumption, etc.*)

OBD On-Board Diagnostics (*vehicle's self-diagnostic and reporting capability – mandated after MY 1996*)

OEM Original Equipment Manufacturer (*generally refers to a replacement part made by the OEM*)

OHC Overhead Cam (*camshaft above combustion chambers which drives the valves and or lifters*)
OPC Official Porsche Center (*Porsche-approved service center, tire and or body shop*)
OS Oxygen Sensor (*sensor located pre and or post catalytic converter that measures O2 content in exhaust*)
PAG Porsche AG (*Porsche Aktiengesellschaft – Porsche Corporation – Porsche Auto Group*)
PAS Power Assisted Steering (*self explanatory – also known as power steering*)
PASM Porsche Active Suspension Management (*electronic damping control system*)
PCA Porsche Club of America (*formed by 139 regions throughout the USA and Canada*)
PCCB Porsche Ceramic Composite Brakes (*siliconized carbon fiber disc with very high temp capability*)
PCM Porsche Communication Management (*navigation system with integrated audio*)
PCNA Porsche Cars of North America (*Porsche’s exclusive importer for USA and Canada – based in Atlanta*)
PDCC Porsche Dynamic Chassis Control (*active anti roll system on Cayenne vehicles with air suspension*)
PDE Porsche Driving Experience (*based at Barber Motorsports Park, AL – Porsche performance driving*)
PDK Porsche Doppelkupplung (*double clutch transmission*)
PHC Porsche Hill Control (*provides downhill assistance by maintaining constant speed - Cayenne*)
PIWIS Porsche Integrated Workshop Information System (*Porsche’s newest system and diagnostic tester*)
POSIP Porsche Side-Impact Protection (*side airbags integrated into the seats*)
PPM Parts Per Million (*self explanatory*)
PSDS Porsche Sport Driving School (*Porsche performance driving - training by professional instructors*)
PSE Porsche Sport Exhaust (*exhaust sound varies with driving behavior*)
PSM Porsche Stability Management (*automatic system that stabilizes vehicle at the limits of dynamic driving*)
PST-II Porsche System Tester II (*diagnostic tester up to MY 2004*)
PTM Porsche Traction Management (*front/rear axle force is electronically controlled by a multi-plate clutch*)
PTS Paint To Sample (*Option Code allowing vehicle to be painted to customer’s color sample*)
PTS Porsche Travel System (*Porsche luggage made to fit particular Porsche vehicles*)
PTV Porsche Torque Vectoring (*variable torque distribution to rear axle and mechanical LSD*)
PWR Power-to-Weight Ratio (*measure of a vehicle’s performance based on its power and weight*)
RDS Radio (broadcast) Data System (*communications protocol for embedding digital info in FM broadcasts*)
RMS Rear Main Seal (*engine oil seal located at the end of the crankshaft, behind clutch or torque converter*)
RON Research Octane Number (Gasoline Grade) (*type of octane-rating for gasoline grades*)
RoW Rest of the World (*referring to rest-of-the-world, non US- models*)
RPM Revolutions Per Minute (*unit of measure for engine speed*)
SAE Society of Automotive Engineers (*resource for vehicle design, manufacturing, operation, maintenance*)
SC Sport Chrono (*option that includes Sport Mode and in-dash Chronometer*)
SAxxxx Sport Application (yyyy) (*nomenclature to identify safety helmet standards for automotive use*)
SNELL Snell Memorial Foundation (*organization that manages US helmet safety standards*)
SRS Safety Restraint System (*seat belts*)
TB Throttle Body (*the valve that regulates the amount of air entering the engine*)
TC Traction Control (*self explanatory – generally works in conjunction with the ABS*)
TIN Tire Identification Number (*DOT mandated tire ID*)
TIP Tiptronic (*Porsche’s torque converter, automatic transmission with manual upshift / downshift feature*)
TPC (or TPM) Tire Pressure Control/Monitoring (*electronic systems which monitors tire pressure/temp*)
TPS Throttle Position Sensor (*monitors the position of the throttle*)
TPS Tire Pressure Sensor (*sensor used by TPSM*)
TPMS Tire Pressure Monitoring System (*same as TPC*)
TT Twin Turbo (*turbocharged engine in which two turbos compress the intake charge*)
UTQG Uniform Tire Quality Grade Standards (*tire standards established by NHTSA*)
V Volt (*unit of measure for an electrical potential*)

VDC Volt **DC** (*Volts of Direct Current - battery*)
VLSD Viscous Limited **Slip Differential** (*LSD which uses variable viscosity fluid*)
VTG Variable Turbine **Geometry** (*more efficient turbo with reduced turbo lag*)
VTS Vehicle **Tracking System** (*GPS-based system to track a stolen vehicle for recovery*)
W **Watt** (*unit of measure for power*)
ZDDP Zinc **DialkyDithioPhosphate** (*motor oil anti-wear additive*)
ZEV Zero **Emission Vehicle** (*self explanatory*)

Now that **U R** up **2** speed on them, **U** can **LOL** when your **BFF** makes a funny face at them. **YMMV**.

To learn more about these acronyms and abbreviations, please visit my website at:
www.PedrosGarage.com

Happy Porsche-ing,

Pedro

© 2011 Technolab/PedrosGarage.com

technolab

Pedro P. Bonilla
 Weston, FL 33327
 (954) 385-0330
ppbon@aol.com
Pedro@PedrosGarage.com
www.PedrosGarage.com
www.PedrosBoard.com

Worried about IMS failure?



We have the **IMS Guardian** DIY Kit in stock, ready to ship. The only engine pre-failure warning system on the market for M96/M97 Porsche engines

The Kit includes a step-by-step DVD installation guide

Call 954.385.0330 **technolab/PEDROSGARAGE**
Florida Pre-Purchase Inspections (PPI)

FREE DIY tutorials and technical info on our website.

technolab
PEDROSGARAGE

We also offer: ECU Tuning, Bored TBs, HID/LED Performance Parts, Brake Caliper Restoration & Painting, AX & DE Magnetic Bras and Numbers, much more.

954.385.0330 • www.PedrosGarage.com

PORSCHE®

PCA Anniversaries!!

APRIL 2012

19?? Ross, Trudy Dockter
1978 Stein, J. Russell Jr & Rose Ann
1985 Kimmel, Stanley H. & Sallye
1989 Bernardi, Richard L. & Sharon R.
1995 Phillips, William A.
2002 Proasi, William A. & Leslie
2003 Faltin, Gary L. & Mary
2003 Huber, Greg
2004 Basham, Richard A. & Karen
2005 Ratterman, Joe & Stella
2005 Sutton, Charles C.
2007 Hardy, Robert E. & Jeanette
2007 Keith, Larry S. & Colleen
2009 Galownia, Joseph M. & Jane
2011 Hurst, Russell S. & Ann Lang

Welcome New Members!!

APRIL 2012

none.....

PACESETTER ADVERTISING RATES

Classified Ads for 'The Mart' are published at no cost to PCA members for 3 months and at nominal cost to non-members. Send copy for ads to the PaceSetter Editor.

Commercial Rates: 1/4 Page \$130, 1/2 Page \$250, Full Page \$500, per year. Quarterly terms are available but require advance payment.

Business card ads are accepted from Kentucky Region members only at \$65 per year. Mail your card and a check made payable to Kentucky Region PCA, to the Pacesetter Editor.



(502) 523-7866
Jeanne Doukas
Realtor

Real Estate Center
7204 Highway 329
jeannedoukas@remax.net

*I'll find you a home to match the beauty
and elegance of your Porsche®!*

RE/MAX
Each office independently owned and operated.™



Diagnostically speaking, there is no substitute.

The best equipment. And the best minds trained to use it. These are your Porsche certified technicians. Dedicated to Porsche vehicles above all else, they must complete over 80 hours a year training in the latest diagnostic technology and techniques. You'll also take comfort knowing all Porsche genuine parts are factory-backed for two years when installed by your authorized dealer. Better still, there is no substitute for having your vehicle serviced by professionals who not only know Porsche, but live Porsche every day.

Porsche Certified Service.

Blue Grass Motorsport
4720 Bowling Blvd.
Louisville KY 40207
502-515-5881

Porsche recommends **Mobil 1**



PORSCHE

THE MART

The Mart Rules

The Mart Ads are free to all PCA members. **It will appear for TWO issues and can be relisted by contacting the newsletter editor.**
All ads must be car related.
To place an advertisement in "The Mart" contact the PaceSetter editor.

Parts/Misc. for Sale

4-Post Lift. Will hold cars, SUV's, or light trucks. American steel. \$2,200 OBO. Jim 502-552-7009 (1)



Two 7x16" and two 9x16" Fuchs alloys, clear anodized lip and black painted centers with Yokohama AVS ES-100 tires. Would like to sell as a set. Will fit Carrera or Turbo. Bought new from Wheel Enhancement in 2006. Pristine condition. \$2,000 OBO Jim 502-552-7009 (1)

PORSCHE EVENT OF THE YEAR!
amidst the stunning beauty of the Great Basin

THE 2012 PORSCHE PARADE



SALT LAKE CITY, UTAH
JULY 8 - 14, 2012

PCA's Premier Event Of The Year!

- Autocross • Concours • Rally • Driving Tours
- Tech Sessions • Social Events • and more!

Salt Lake City -
Mountains - Scenic Wonder - Crossroads of the West

Registration opens March 13, 2012 so start planning now! Register Early to Join the Fun!

Learn more and register at parade2012.pca.org



- Indoor Storage
- We now Mount Tires
- Morning Shuttle Service
- Parts & Service

STUTTGART *Specialists*

4204 Poplar Level Rd.
Louisville KY 40213
502.454.5591

JUNE MEMBERSHIP MEETING



13201 Complete Court

Louisville, KY 40223

502-254-3001

silas@502ac.com

<http://www.502autoclub.com/>

Monday

June 11th

7:00 PM

FREE PIZZA NIGHT!!

Stoddard
55 years and counting since 1957

Restoration Parts World Wide
Stoddard
NALLC

25th Annual All Porsche Car Show & Swap Meet!

- New and Used Hard to Find Parts
- Peoples Choice Porsche Car Show
- Porsche Vendors from Around the Country
- Old and New Porsche Cars on Display

All Porsche Vendors are Welcome. Call for Details.
Check www.stoddard.com for details
800-342-1414

**Literature
& Toy Meet**
Friday June 8TH
6PM-9PM

**Authentic
STODDARD
Parts**
190 Alpha Parkway
Highland Heights, Ohio 44143
United States

**All Porsche
Car Show
& Swap Meet**
Saturday June 9Th
8AM-3PM