

Pace Setter

JANUARY 2012

"After Holiday Party" Kentucky Region PCA Jan 14, 2012

- When:** January 14th, 2012
Time: 7:00pm 'til 11:30pm
Where: Lake Forest Lodge/Party Room @ 511 Woodlake Dr.
(502) 245-5253 (*same place as last year*)
Cost: \$10.00/ person

The membership is invited to attend our 2011 "After Holiday Party". The party is set for Saturday evening, January 14th. It will be held at the Lake Forest Lodge party room like last year. The cost will be \$10 per person. At this time we're limited to the first 50 people signing up ahead of time. There is no pay at the door. If more than 50 pay before Jan 13th we will accommodate them. The food will be from Mark's Feed Store with appetizers and holiday drinks included. If you wish to bring a holiday dessert to share with everyone, that would be wonderful. We'll have music and door prizes. If anyone wishes to donate a door prize, please let us know. The more the merrier!

Please mail your RSVP along with your check to:

After Holiday Party KyPCA
PO Box 35341
Louisville KY 40232

(Make check payable to: The Kentucky Region PCA)



***KY PCA Website www.kypca.org
Forums & E-Mail List***

Stay informed and participate! Join the KYPCA forums & mailing list and be notified of upcoming events, club news, and membership information.

Remember, it's your participation as a member that makes the club successful.

Please visit the below website and sign-up today!

<http://forums.kypca.org/>

Current Forums List:

- **Let's Go Driving**
- **Want To Sell**
- **Want To Buy**
- **Recycler**
- **Tech Talk**
- **Make It Shine**
- **Track & DE**
- **Autocross**
- **Club News**
- **Off Topic**
- **Member Rides (upload your photos)**

www.kypca.org/news

(club activities, meetings, or general announcements from KY Region PCA, the latest issue of the Pacesetter (our monthly newsletter), announcements of new models, racing news)

www.kypca.org/information

(club specific documents, upcoming club events, frequently asked questions, mailing list sign-up, Web Links)

www.kypca.org/media

(photos and videos from club events (member submitted or just something we think is really cool and Porsche related))

Having trouble viewing the kypca.org website? Do you have a suggestion on how we can improve it? Please send any feedback you might have to feedback@kypca.org.

**KENTUCKY REGION
PCA OFFICERS & BOARD**

President:

Steve McCombs
2603 Foxy Poise Rd.
Louisville, KY 40220
(502) 558-0306
shmc930@hotmail.com

Vice President:

Jeremy Miller
2409 Running Brook Trail
Fisherville, KY 40023
(502) 396-9111
jers993@msn.com

Secretary:

Chad Rainey
3904 Chesley Martin Dr
Louisville Ky 40299
502 439-8251
raineycd@hotmail.com

Treasurer:

Richard Darnell
4100 Narcissus Dr.
Louisville, KY 40219
(502) 889-8120
rdarnell@ayebblink.com

Membership:

Tony Proasi
1522 McKay Ave.
Louisville, KY 40213
(502) 751-1126
wagwerks@msn.com

Activities Chair:

Steven Rountree
(502) 386-3001
smr9463@insightbb.com

PaceSetter Editor:

Belinda Schweinhart
10712 Sun Ridge Rd.
Goshen, KY 40026
(502) 228-9725
article@kypca.org
belinda@lowcarbrecipes.com

Board Members:

Andy Daugherty (2010-2011)
1283 Farmdale Ave.
Louisville KY 40213
(502) 744-9343
dobie356@msn.com

Mark Lichtefeld (2010-2011)
5726 Moser Farm Rd.
Prospect, KY 40059
(502) 412-4185
marke@lichtefeldinc.com

Jason Miller (2011-2012)
6607 Westwood Way
Crestwood, KY 40014
(502) 253-5704
millermd@insightbb.com

Past President:

Tony Proasi
1522 McKay Ave.
Louisville, KY 40213
(502) 751-1126
wagwerks@msn.com

Website Chair:

Mark Bos
mbos@bluegrass.net

SW KY Area Rep.

Richard Hughes
981 Dunbarton Ave.
Bowling Green, KY 42104
(270) 991-4848
jrhughes47@hotmail.com

2012 KY Region PCA Calendar

www.kypca.org

Current Events!!	JANUARY	FEBRUARY	MARCH
<p>*****</p> <p>NEW LOCATION AGAIN!!</p> <p>*****</p> <p>January 9th, 2012 Membership Meeting El Tarasco Restaurant Time: 7:00 PM Contact: Steve McCombs (see page 16)</p> <p>January 14th, 2012 Breakfast Social Frisch's Poplar Level Road Time: 8:00 AM- ??? (see page 14)</p> <p>NOTES: Contact Information can be obtained in the newsletter on Page 7.</p> <p>All events are subject to change due to weather and availability.</p>	<p>9th—Membership Mtg. El Tarasco Restaurant (see page 16)</p> <p>14th—After Holiday Party. (see page 1)</p> <p>14th—Breakfast Social Frisch's—Poplar Level Road (see page 14)</p>		
	APRIL	MAY	JUNE
			<p>8-10th—DE Event Putnam Park</p>
	JULY	AUGUST	SEPTEMBER
			<p>14-16th—DE Event Putnam Park</p>

**Central Indiana PCA
Calendar**
www.cirpca.org

CKR Solo Schedule

Central KY Region SCCA
Schedule is at: www.ckrscca.org



Lichtefeld Incorporated

A Construction and Development Company



Office
Retail Centers
Medical
Churches
Manufacturing
Warehouse
Banks
Schools



Let Lichtefeld Handle the Business of Building
While You Handle the Building of Your Business

Total Turn Key Design/ Build Construction and Leasing. Call for Your Free Estimate/Consultation

www.Lichtefeldinc.com

Contact: Mark Lichtefeld

502-589-4777

To maintain machines like these...



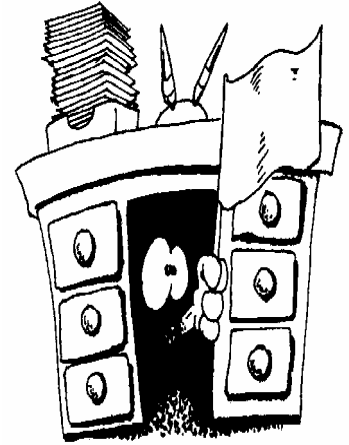
... Takes skills like ours.

2 locations Middletown 245.3414 Bowman Field 452.9721 www.steinauto.com



President's Report

Steve McCombs—KY Region President



Happy 2012 to everyone and my wish for all is an exciting and prosperous New Year. The Kentucky Region is gearing up for another strong DE year with two events in June and September. And with the strong support from BlueGrass Motorsports, our Region will continue offering the best DE experience you'll find anywhere. Along with those events, we'll be planning some fun and interesting drives and other events in the coming months. If you have any requests for places to go, please let us know.

This year we're planning on changing a few things, mainly in the way the PaceSetter newsletter is distributed. Our plans are to go electronic and do away with the postal mailed copy. The new PaceSetter E-version will have more content, hundreds more color pictures and we'll work towards making it printable on your own printer. Our goal is to shoot for the June or July issue for implementation so it is very important that you make every effort to sign up on the website so you can receive your copy. By signing up you will also get monthly (very limited) notices, mainly concerning membership meeting announcements and when the PaceSetter will be available for viewing. We'll also be changing the Bylaws to reflect E-voting for Officers.

I would like to see more involvement from the membership this year. I'm very interested in your thoughts on how to make being a member more enjoyable and interesting. For example, we're having our After Holiday Party Jan 14th and a good time will be had by all. In February, Porsche releases the new 991 and BlueGrass Motorsports will have an unveiling event that we plan on attending. With our Activity Chair's help we should plan on doing the Asheville/Biltmore Estate weekend, the Tennessee Tubs event in May and many more. The "many more" part is what I'm looking for from the membership. Please take some time to send Steven Rountree or myself an email with your ideas.

So I end with the note about January's membership meeting. It will be held at El Tarasco Mexican Restaurant at 7:00.

Hope to see you then.

Steve McCombs

Dan Stewart's Trip to the Porsche Factory Museum Oct. 2009—desperate times call for desperate measures!



3 different versions of 917 race cars



997 Supercup car



997 cutaway display with videos of factory assembly operations



959 Rally car from Paris-Daakar Rally



Formula 2 Porsche



914-8 Factory 8 cylinder version of 914, Dr. Piech's car



Green 911S—Dorthea Porsche's personal car



914-8 interior view



911 styling exercise—Ferry Porsche hated this



Early 356 Cab



View of factory buildings across the street from the museum



Porsche Headquarters building

...more photos on page 10...

The Club AT PUTNAM PARK

The Club is a country-club style lapping day member-only group that offers exclusive lapping events at the facility, limited membership, access to member-only clubhouse, private showers and bathrooms, and the opportunity to lease garages for storage and maintenance of your vehicles.

The Club will offer 100 days of member-only lapping each year, beginning in March and running throughout the season. Initial Charter membership is set at 40, with an expansion plan in place that allows for additional lapping days with increased membership. Members must be at least 21 years old and have completed a minimum of five events.

Many of The Club lapping days will be held from 9:00 a.m. to 5:00 p.m.. However, about 1/3 of the days- a day per week- will be held from 12:00 p.m. to 8:00 p.m.. This allows for Members to work and then get out to the track for afternoon/evening lapping. There will be 3 run groups: track-prepared cars, race-prepared cars, and formula/sports racers. Passing will be allowed in all areas, and therefore only the most experienced drivers will be accepted.

There is an initial membership fee as well as a flat annual fee for each membership type. There are three memberships available: **Founding, Individual, and Corporate.** Applications are being accepted now, with the first 20 Individual Membership Applications receiving the discounted membership of \$5,000.00.

Please go to www.putnampark.com for complete information and download membership applications, or call toll-free (866) 702-0303.

Fleet of Ferraris ruined in Japan sportscar pileup

AP Associated Press

AP – Mon, Dec 5, 2011



TOKYO (AP) — An outing of luxury sportscar enthusiasts in Japan ended in an expensive freeway pileup — smashing a stunning eight Ferraris, a Lamborghini and two Mercedes likely worth more than \$1 million together.

Police say they believe the accident Sunday was touched off when the driver of one of the Ferraris tried to change lanes and hit the median barrier. He spun across the freeway, and the other cars collided while trying to avoid hitting his car.



Video of the crash aired by NTV, a major national network, showed several smashed, bright red Ferraris cluttering the freeway.

Even a used Ferrari in Japan can fetch \$100,000 or more, meaning the total damage may be \$1 million or more.

Police declined to comment on the total amount of damage, but said some of the vehicles were beyond repair.

NTV quoted the driver of one of the tow trucks brought in to clear the scene as saying it was the most expensive crash site he had ever seen.

No one was seriously injured, but police in Yamaguchi prefecture said 10 people were treated for bruises and cuts. Police say 14 cars were involved altogether.



The luxury cars were all in one place because they were being driven by a group of automobile enthusiasts on their way to nearby Hiroshima.



To see more photos and videos go to <http://tinyurl.com/cpqnnj8>

356 Holiday Pics

By Dan Stewart

...trying to fill pages again..... Thanks, Dan!



...continued from page 7



Museum entrance



Rail station stop for Porsche

**PCA
Anniversaries!!**

NOVEMBER

1999 Rocha, Joe & Daisy E
2001 Zamora, Alvaro & Gosia
2003 Woods, William
2004 Laureano, Romeo N & Mary Ann
2005 Moneymaker, John E. - & Shelby
2008 Dennison, Kenneth G. & Melissa
2008 Rountree, Steven M.
2010 Michael, Patrick W. & Pam

**Welcome
New Members!!**

NOVEMBER 2011

Border, Bruce E. & Valerie
Elizabethtown, KY
1983 911 SC Purple

(502) 523-7866
Jeanne Doukas
Realtor



Real Estate Center
7204 Highway 329
jeannedoukas@remax.net

*I'll find you a home to match the beauty
and elegance of your Porsche®!*



RE/MAX
Each office independently owned and operated.™



PACESETTER ADVERTISING RATES

Classified Ads for 'The Mart' are published at no cost to PCA members for 3 months and at nominal cost to non-members. Send copy for ads to the PaceSetter Editor.

Commercial Rates: 1/4 Page \$130, 1/2 Page \$250, Full Page \$500, per year. Quarterly terms are available but require advance payment.

Business card ads are accepted from Kentucky Region members only at \$65 per year. Mail your card and a check made payable to Kentucky Region PCA, to the PaceSetter Editor.

Monthly Membership Meeting Minutes—December

By Chad Rainey, KY Region Secretary

Date: 12/12/2011

Location: Bluegrass Porsche

Officers Present: Steve McCombs, President; Jeremy Miller, VP; Richard Darnell, Treasurer; Chad Rainey, Secretary

Board Members Present: Jason Miller

Chairs Present: Steven Rountree, Activities Chair; Mark Bos, Website Chair

Attendance: 24 members

- Steve McCombs announced that the same officers from 2011 will be in service for 2012. He also re-iterated the proposed bylaws be changed allowing e-mail ballots to increase nominations and vote participation.
- He also re-iterated that the monthly paper Pacesetter was planned to go electronic in 2012. Be sure your information that PCA National has is up to date (e-mail address) – logon to pca.org. That way you will get club notifications, announcements, and the monthly newsletter once it goes electronic. The electronic version can have more content, links, videos, more and color photos, calendar, and much more! As always, if you have any articles, photos, etc that you think would be good for the newsletter, please submit them to Steve or Belinda.
- The After Holiday Party will be on January 14 at 7pm. If anyone wants to donate door prizes, please contact Steve. Some door prize ideas are HPDE days and a Porsche bottle opener.
- Steve reported that 1 KYPCA member (Steve) was at the Toys For Tots. For the weather, there was a good turnout of other cars.
- Jeremy reported on Putnam Park activity: repaving in the fall of 2012 and garages will be built and hopefully ready before the June 2012 DE! Putnam is also forming a drivers club, see Jeremy or visit putnampark.com for more details.
DE dates are June 8, 9, 10 and September 14, 15, 16 2012. Due to the new improvements at Putnam, the rate for the DEs will be \$350 instead of \$310 to cover the extra costs the club incurs.
Jeremy also announced that F1 is again on track to come to the US!
- Richard gave us the numbers: around \$40k in the bank but the track down payment of \$6k is coming up soon.
- Next meeting is on January 9 at El Tarasco. Hope to see you there!

For the most up-to-date information, please use the award winning KYPCA.org website. It has ALL the latest information and a new forum to communicate with your fellow members. The website is at <http://www.kypca.org>



Diagnostically speaking, there is no substitute.

The best equipment. And the best minds trained to use it. These are your Porsche certified technicians. Dedicated to Porsche vehicles above all else, they must complete over 80 hours a year training in the latest diagnostic technology and techniques. You'll also take comfort knowing all Porsche genuine parts are factory-backed for two years when installed by your authorized dealer. Better still, there is no substitute for having your vehicle serviced by professionals who not only know Porsche, but live Porsche every day.

Porsche Certified Service.

Blue Grass Motorsport
4720 Bowling Blvd.
Louisville KY 40207
502-515-5881

Porsche recommends **Mobil 1**



PORSCHE

THE MART

The Mart Rules

The Mart Ads are free to all PCA members. It will appear for three issues.

All ads must be car related.

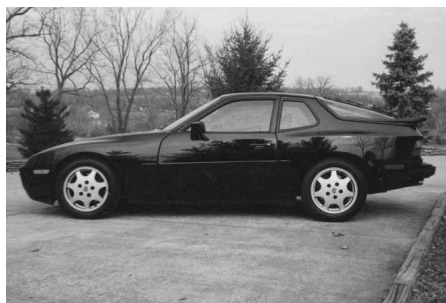
To place an advertisement in "The Mart" contact the PaceSetter editor.

Cars

1996 911 (993) Turbo Coupe - Black/Gray, all original, never tracked or modified, in excellent condition. 400hp, 400 ft/lb Tq, 4 wheel drive six speed. Maintenance records stamped by Porsche. Factory Nokia 6 CD sound sys. New clutch and flywheel. 116K miles and priced accordingly. Your best opportunity to own the last and best of the air-cooled Turbos. You won't find a better example at a better price! \$49,500 Greg Furnish (502) 424-8728 gfurnish@insightbb.com



1989 944S2 - 5 Spd. Black w/ black leather interior, 34,000 miles, orig. owner, garaged kept, no winters, no smoke, all original, like new tires, never tracked or raced, all maint. records and original paperwork. Includes Porsche car cover, bra and painted wheel centers. Excellent condition. \$14,900. Richard Bernardi choppah98@gmail.com or 502-232-0813.



1987 930—silver with black interior. 62,000 miles. Mostly stock with several spares. \$27,500. Chuck Breitigam (502) 254-5079.

Wanted

Need one copy of the **OCT. 2003 AUTUMN DERBY poster** for my collection. With or without black frame. Contact: Richard Hughes, 981 Dunbarton Ave, Bowling Green, KY 42104, CELL (270) 991-4848

Parts & Misc...

Cleaning out the basement and located four (4) Kentucky Region PCA commemorative wine glasses: three (3) of the 20th anniversary, one (1) of the 25th anniversary. All have the Kentucky Region horse head logo on them. \$ 5 each or all for \$18. Delivery in Louisville area included.

Phillip & Cheryl Doty, (Past Presidents, KR, PCA), 502/244-0478 (H); 502/386-1522 (Cell)

Saturday Morning Breakfast Social—Every 2nd Saturday

The breakfast club continues to be a good thing despite the "day off early hour". Most of the turnout is made up of members with older Porsches. 356's, 911's, 912's, 914's & 944's grace the parking lot with a Boxster or a Cayman in the mix to look after the older rides. The owners are really hands-on people with their cars. The conversations over coffee are always geared to what they have done themselves to keep these senior Porsches in first class condition. No dealership repairs for this bunch! The 2nd Saturday breakfast participants really are the "Patrons Of Older Porsches".

The menu at Frisch's is extensive, the breakfast bar is wonderful and the coffee is just right. We've discussed a time change for this event but reconsidered until we see how going back to standard time works out. The early time does allow everyone to make it to Cars n Coffee in the East End without rushing. This is a fun bunch of members, come join us. We would enjoy seeing all of you there.

No reservations required, just show up.

Contact Edgar Smiley at 502.939.3595 (cell) or deKYblugras@aol.com



- Indoor Storage
- We now Mount Tires
- Morning Shuttle Service
- Parts & Service

STUTTGART *Specialists*

4204 Poplar Level Rd.
Louisville KY 40213
502.454.5591



The Kentucky Region Porsche Club
P.O. Box 35341
Louisville, KY 40232

Presorted
Standard Mail
U.S. Postage Paid
Louisville KY
Permit No. 1190

January 2012

ADDRESS SERVICE REQUESTED

Monday
Jan. 9th
7:00 PM



110 Fairfax Avenue (across the street from Trinity High School)
St. Matthews, KY 40207
Phone # 895-8010

El Tarasco Mexican Restaurant

NEW MEETING LOCATION!!!!